

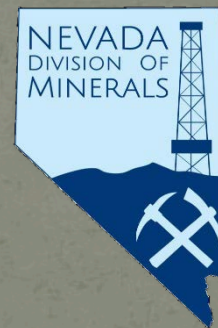
Nevada Land Withdrawals from Mineral Entry A Historical Perspective

May, 2018 update



University of Nevada, Reno

Modified from original study in 2011 by:
S. Bassett, I. Morrison, and K. Berry
Department of Geography
Mackay School of Earth Sciences and Engineering,
College of Science
University of Nevada, Reno



Updated in May, 2018 by:

Garrett A. Wake
Nevada Division of Minerals
gwake@minerals.nv.gov
Minerals.nv.gov

Disclaimer:

The Nevada Division of Minerals (NDOM hereafter) assumes no responsibility for errors or omissions. No warranty is made by NDOM as to the accuracy, reliability, or completeness of these data for individual use or aggregate use with other data; nor shall the act of distribution to contractors, partners, or beyond, constitute any such warranty for individual or aggregate data use with other data. In no event shall NDOM have any liability whatsoever for payment of any consequential, incidental, indirect, special, or tort damages of any kind, including, but not limited to, any loss of profits arising out of the use or reliance on this data.

“Unbelievable as it may seem, an area larger than that encompassing 25 of the 27 states east of the Mississippi River is no longer accessible even for mineral exploration, not to mention development for mining”

**J. Allen Overton. Jr.
President
American Mining Congress**

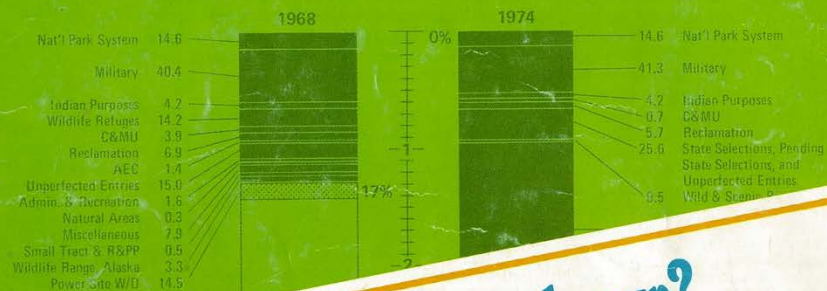
1975

MINING

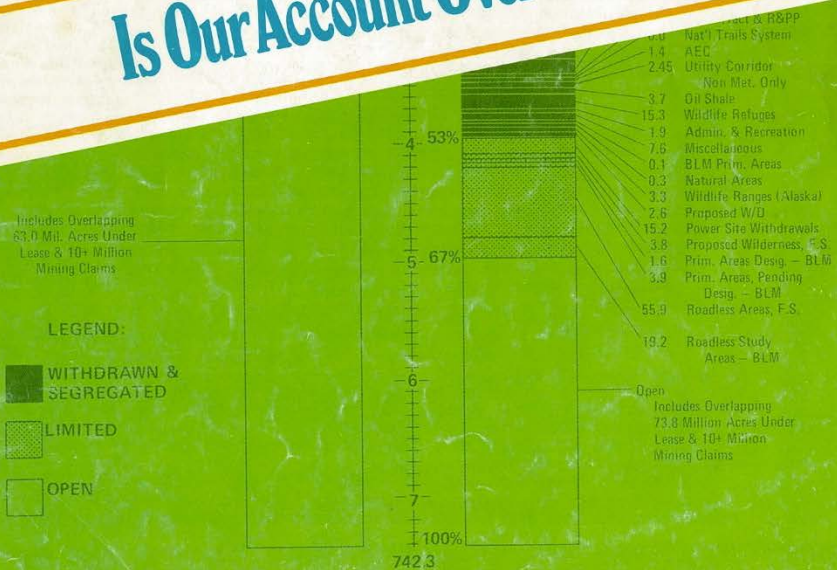
CONGRESS JOURNAL

PUBLISHED BY THE AMERICAN MINING CONGRESS

PUBLIC LANDS EXCLUDED FROM MINERAL EXPLORATION AND DEVELOPMENT UNDER THE MINING LAW



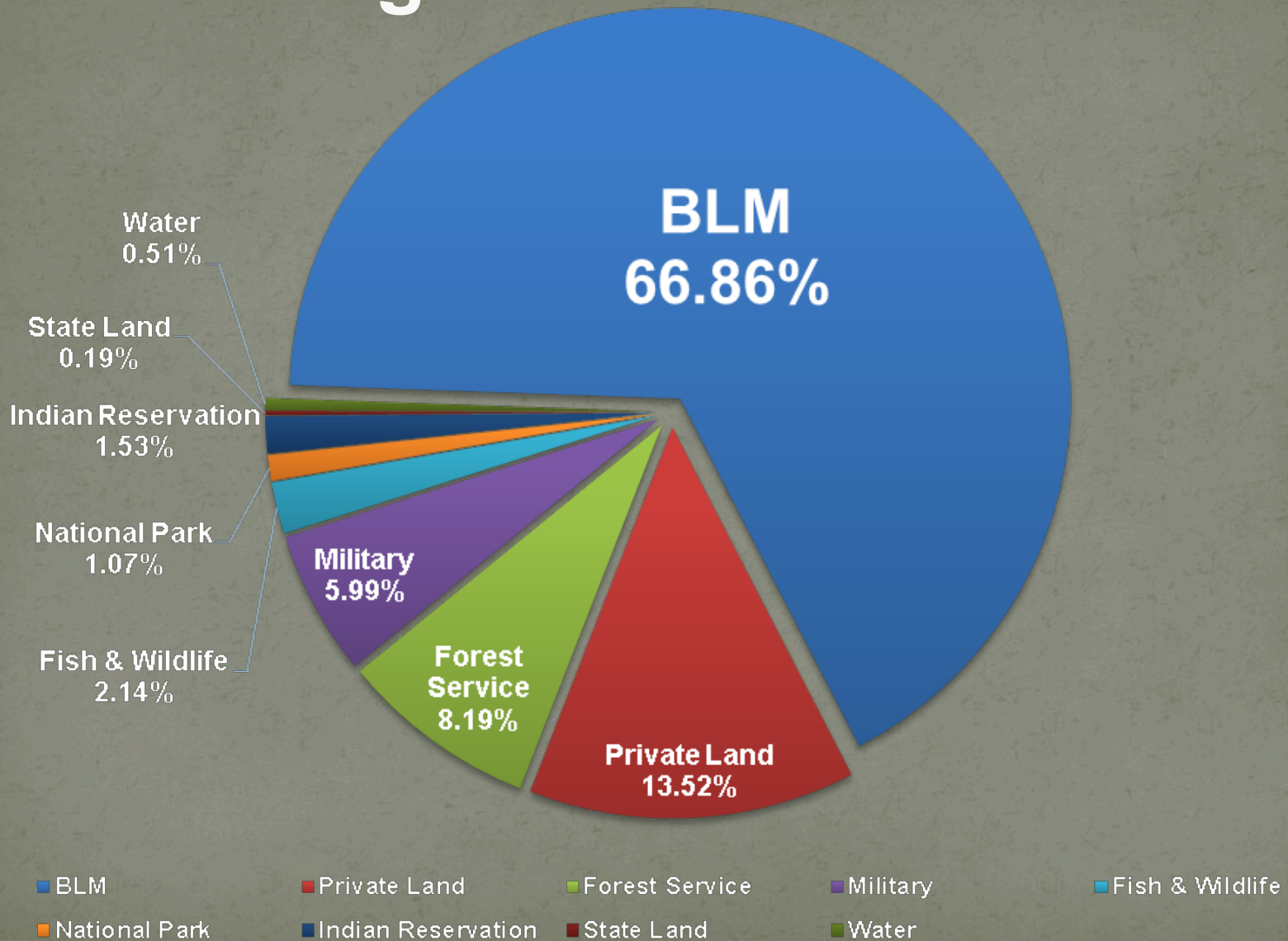
Is Our Account Overdrawn?



NEVADA Statistics

- Became Territory of the United States in 1848 as part of the Treaty with Mexico following the Mexican-American War
- Part of Utah Territory originally then became Nevada Territory in 1860
- Established as the 36th state of the Union October 31, 1864 – Population @ 50,000
- Total Area: 70,264,320 acres, 7th largest state

Who Manages/Owns Nevada Lands?



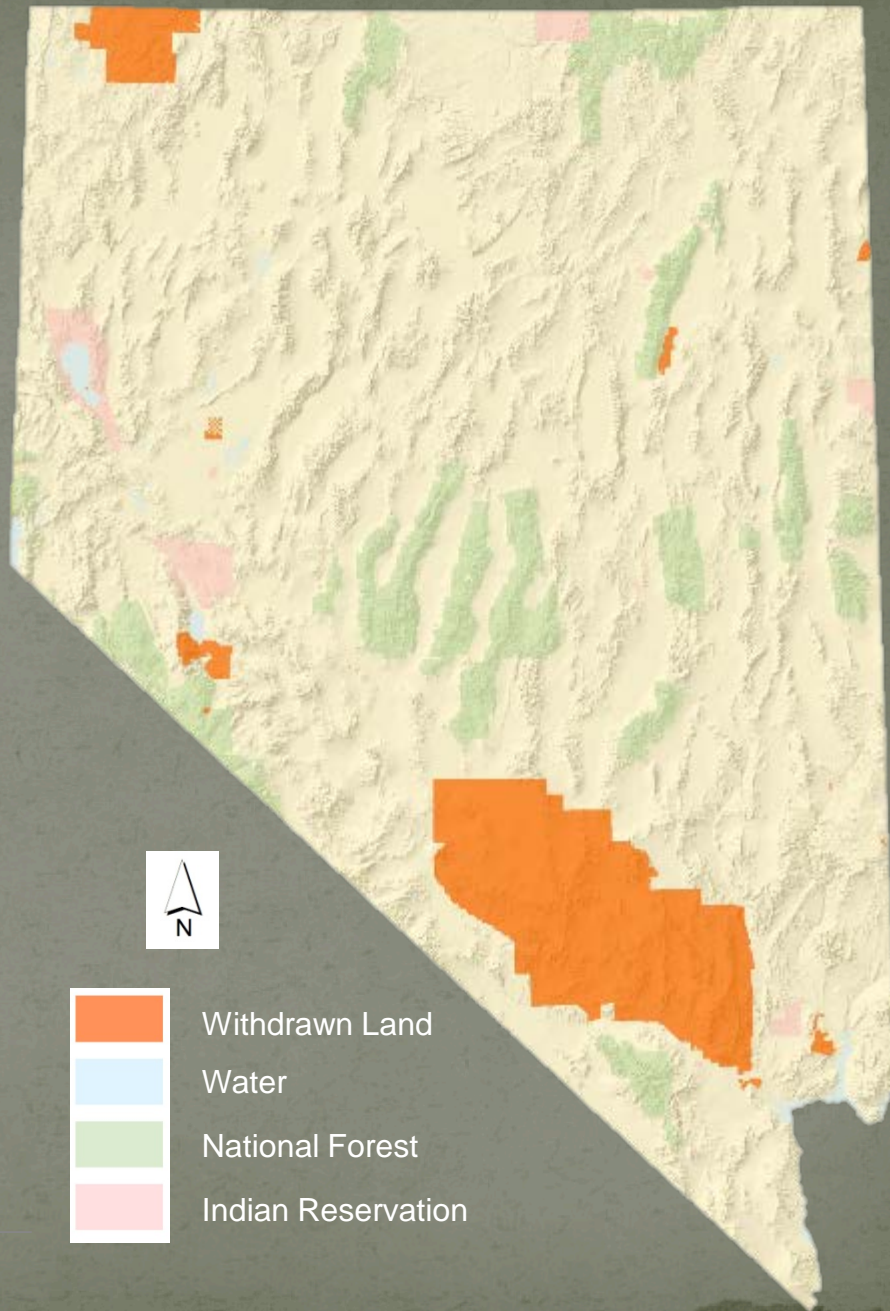
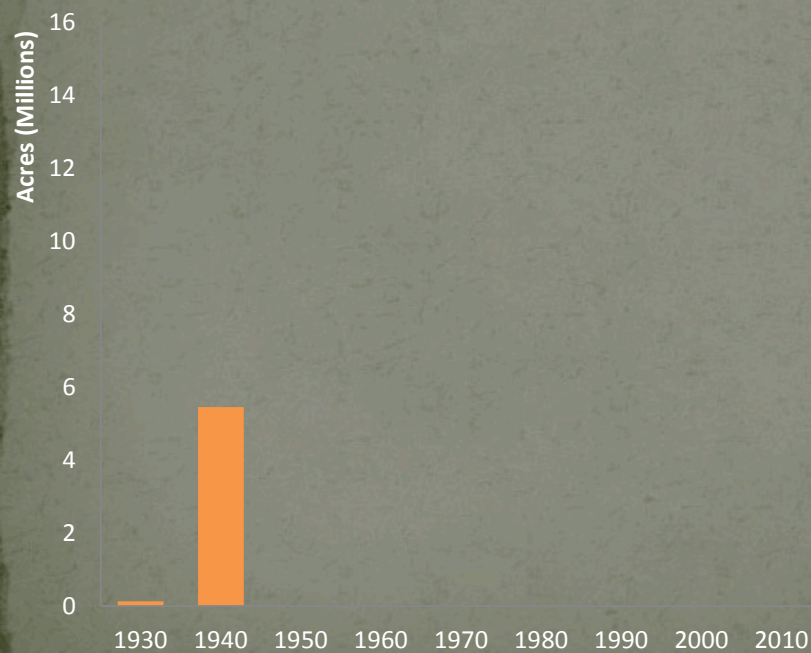
Who Manages/Owns Nevada Lands?

Land Status	Acres	% of Nevada
BLM	46,977,225	66.86%
Private Land	9,497,542	13.52%
Forest Service	5,756,387	8.19%
Military	4,212,128	5.99%
Fish & Wildlife Service	1,503,388	2.14%
National Park Service	750,709	1.07%
Bur. of Indian Affairs	1,076,574	1.53%
State Land	132,334	0.19%
Water	358,033	0.51%

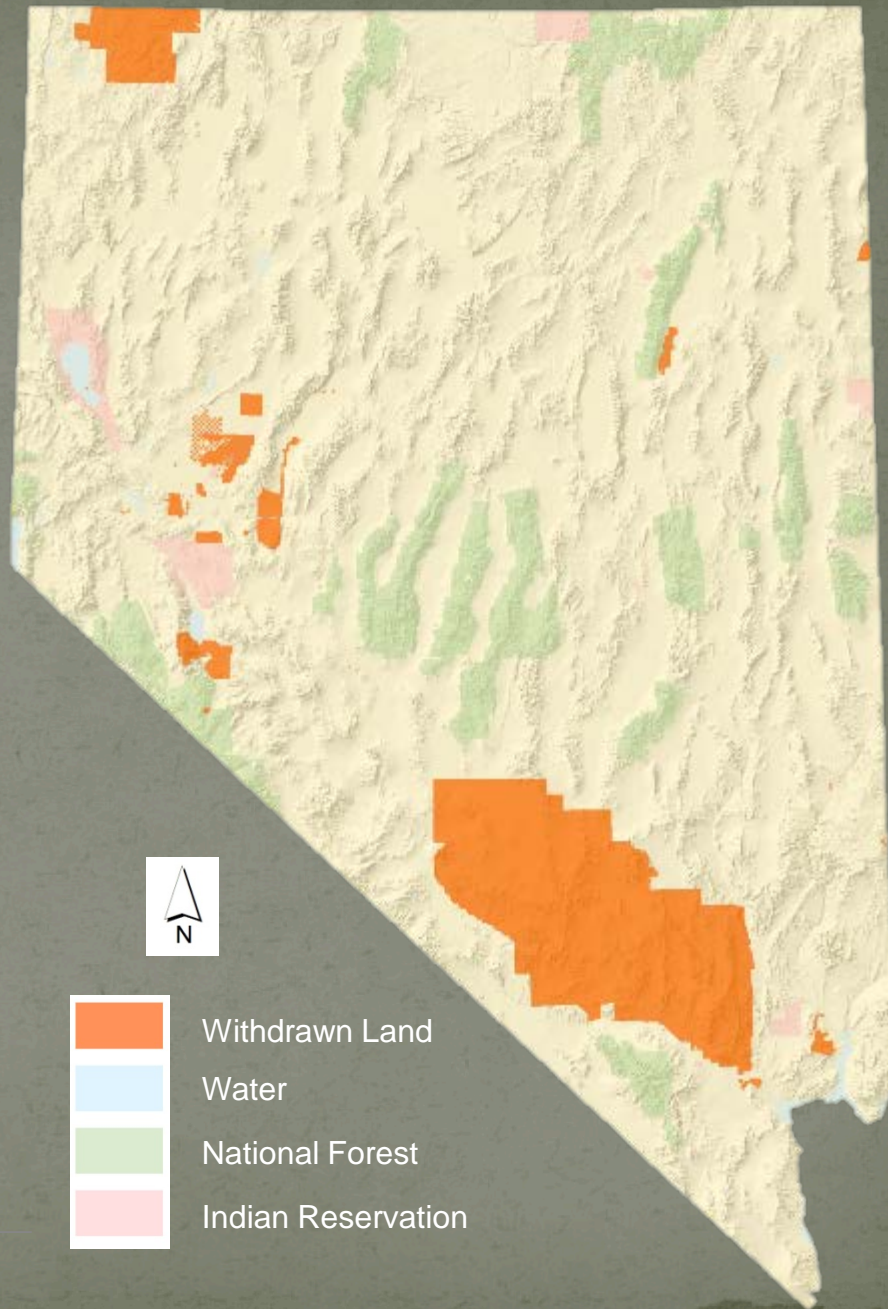
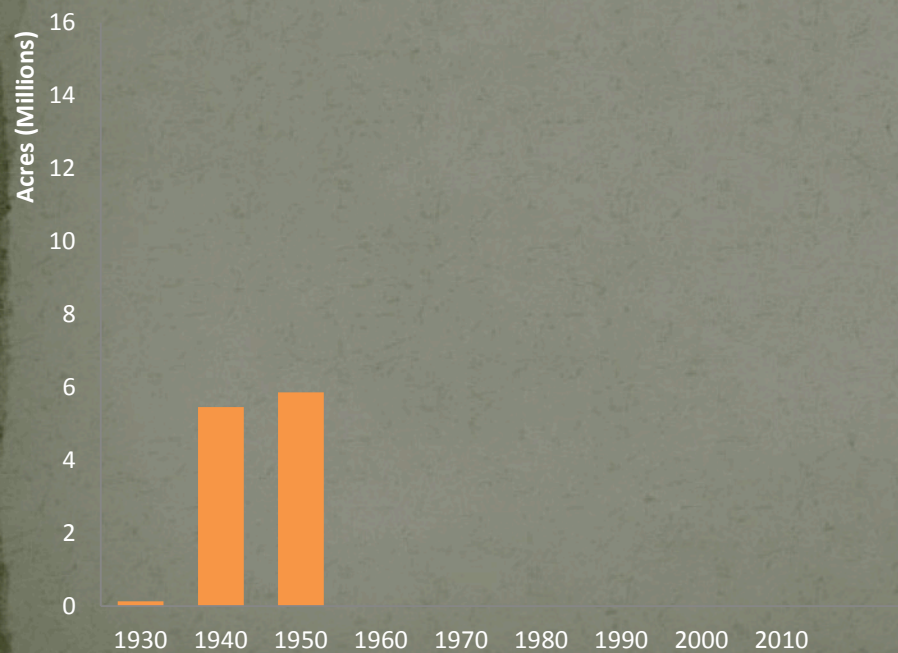
Nevada Land Withdrawals to 1930



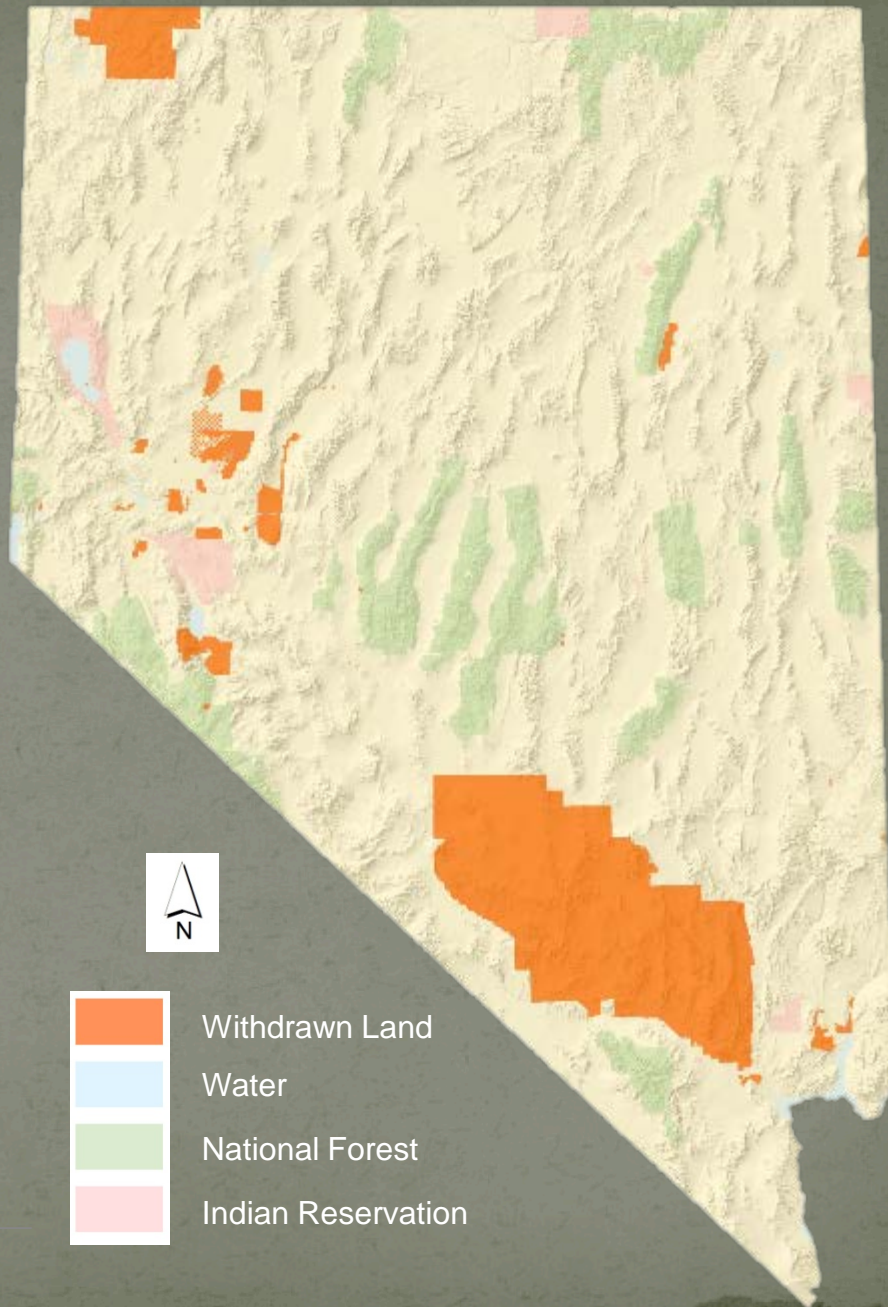
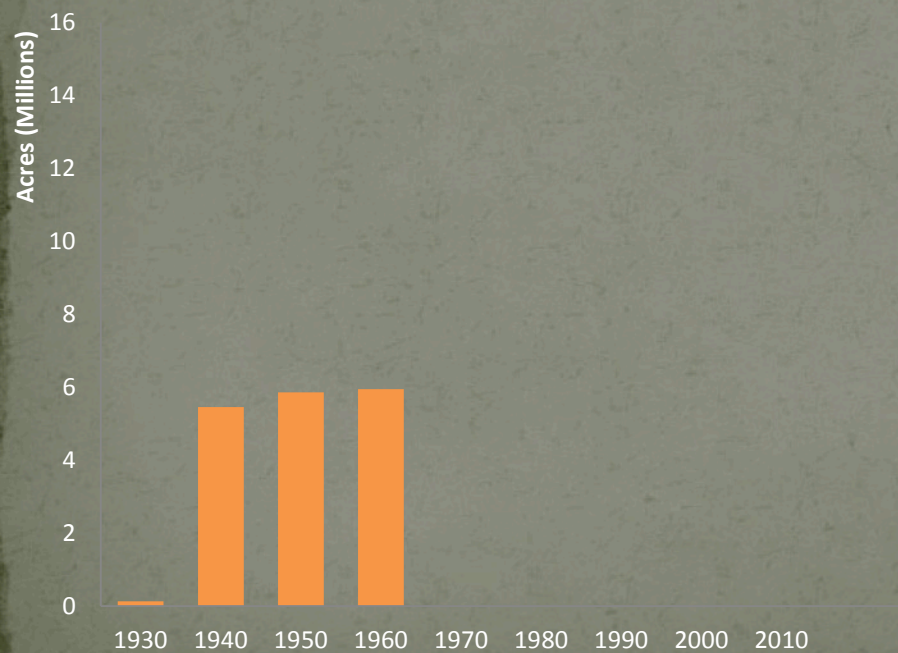
Nevada Land Withdrawals to 1940



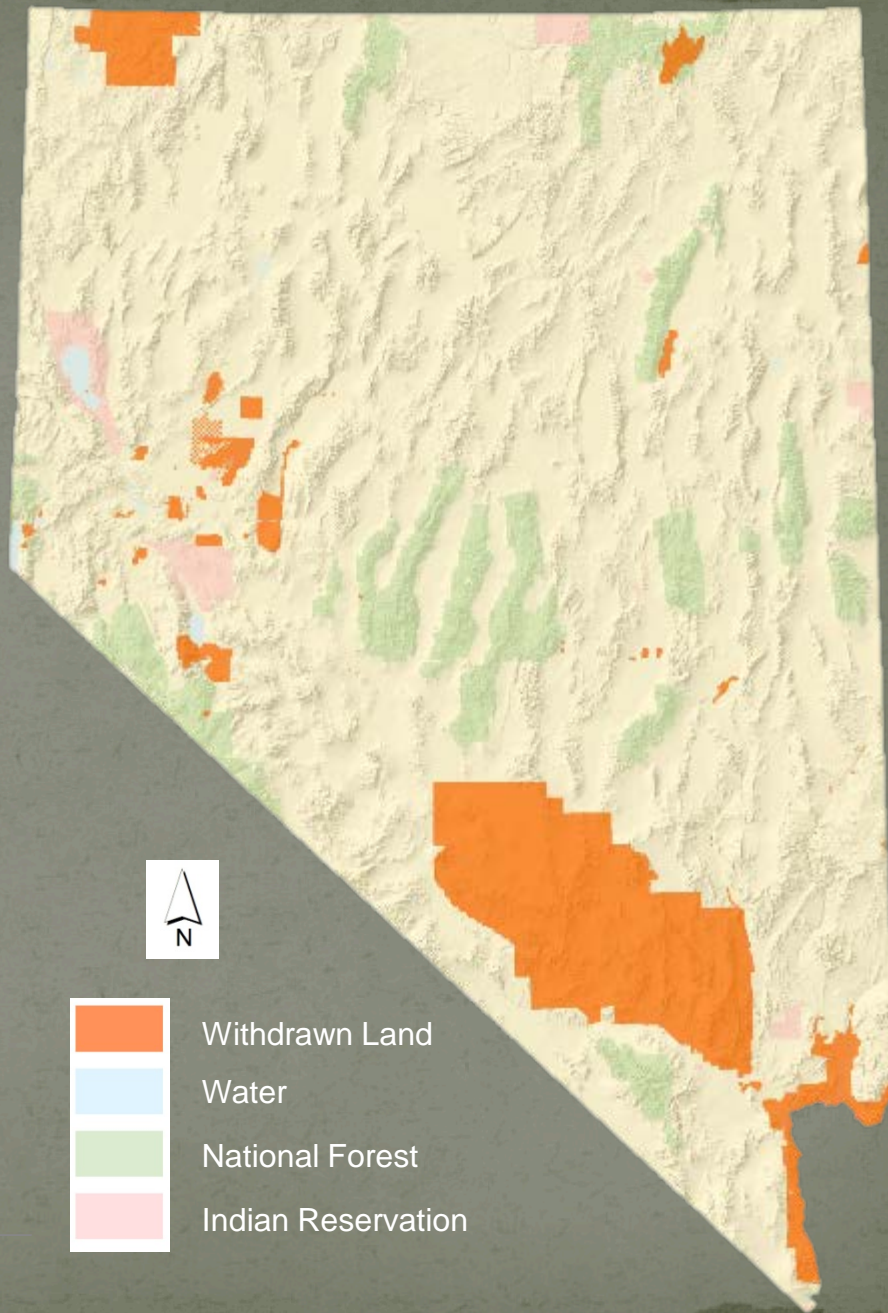
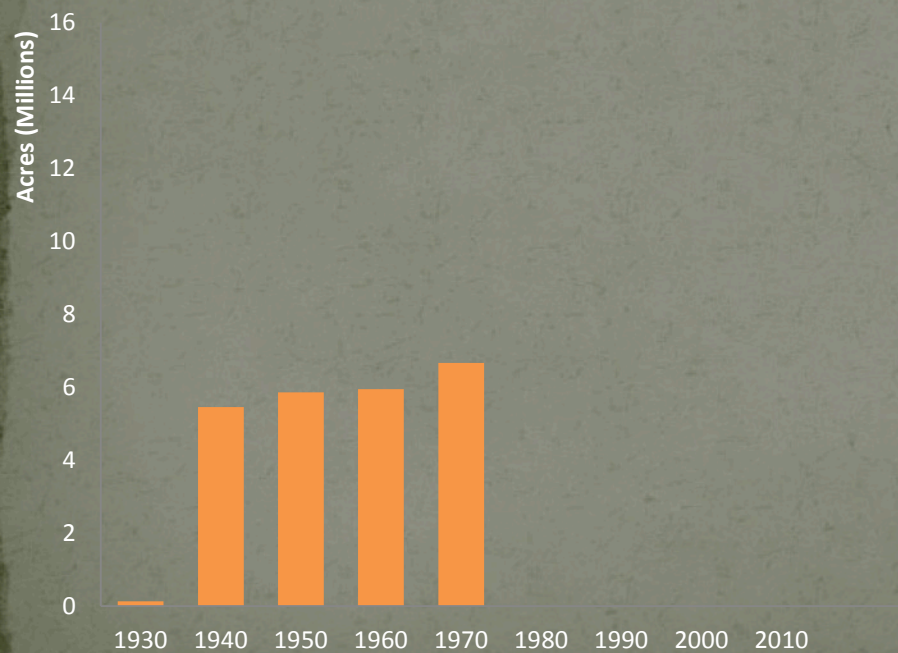
Nevada Land Withdrawals to 1950



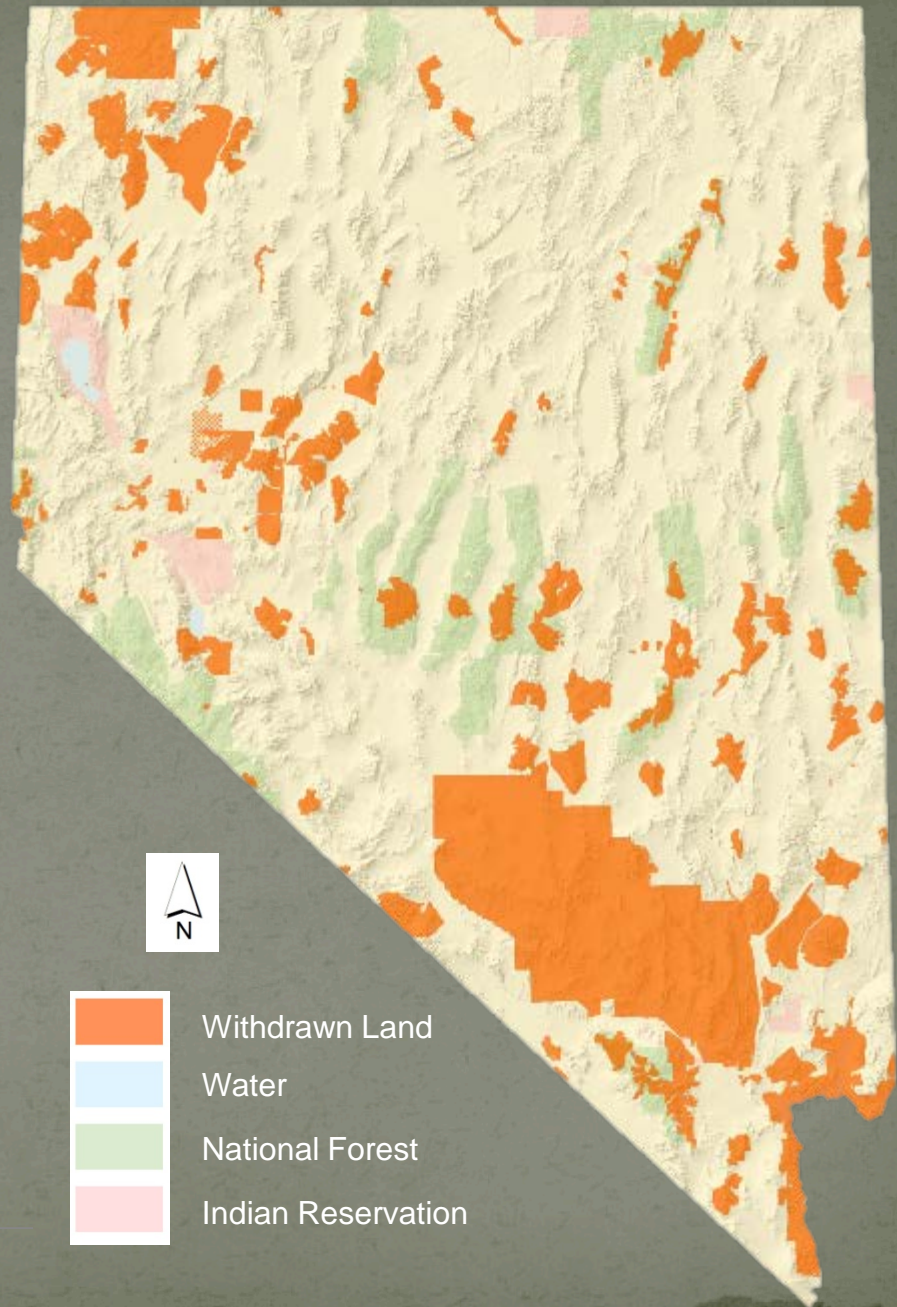
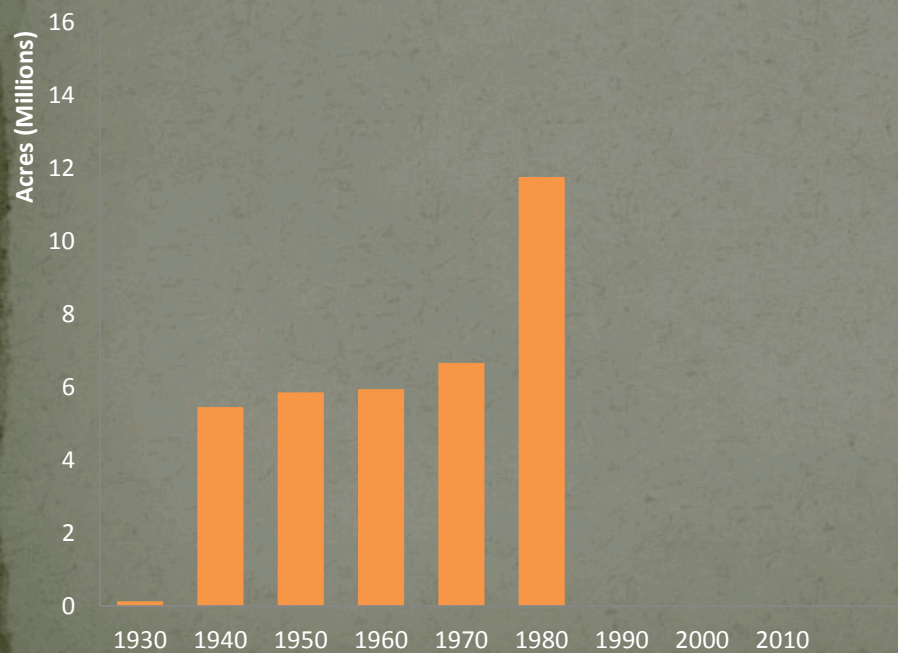
Nevada Land Withdrawals to 1960



Nevada Land Withdrawals to 1970

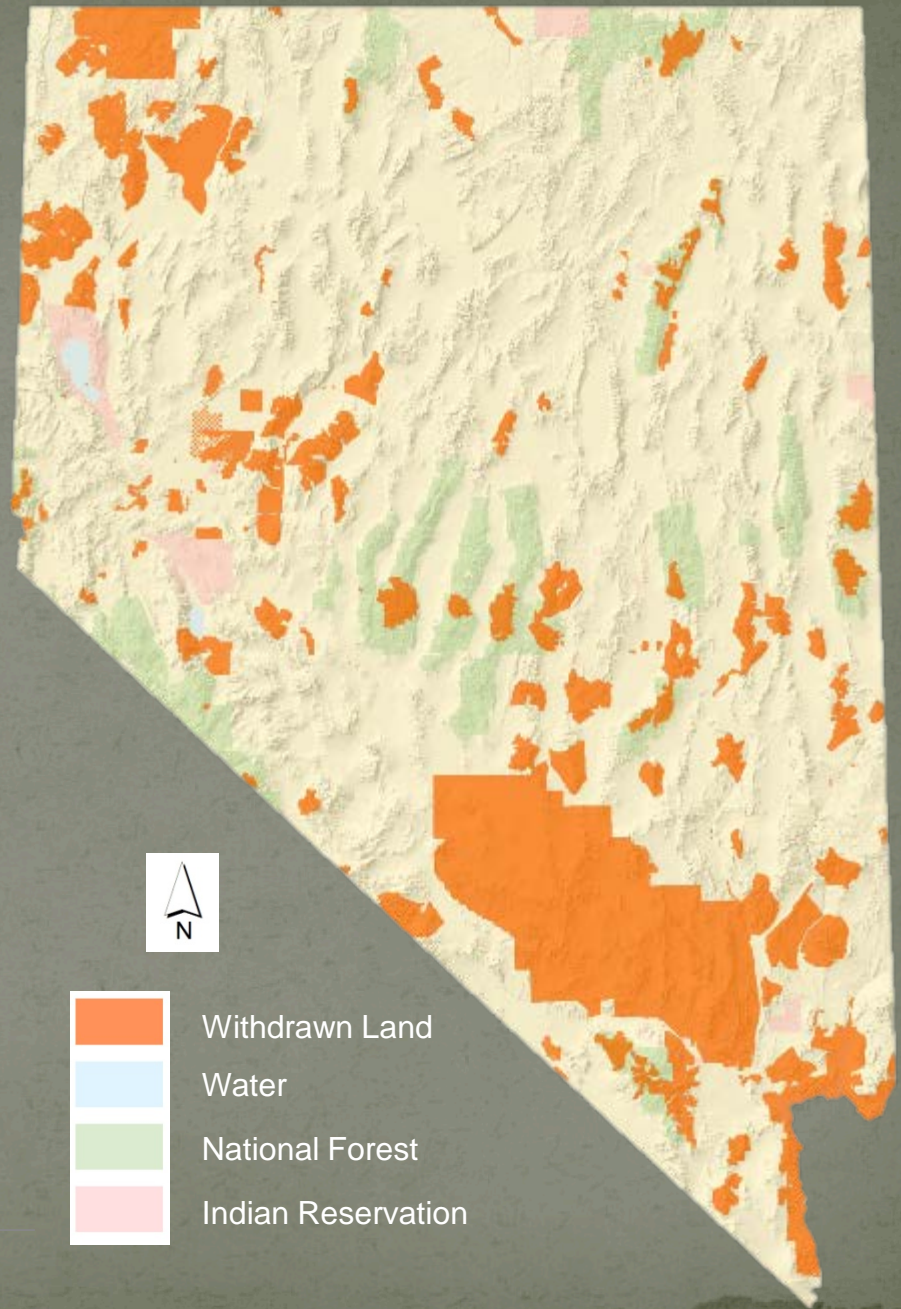
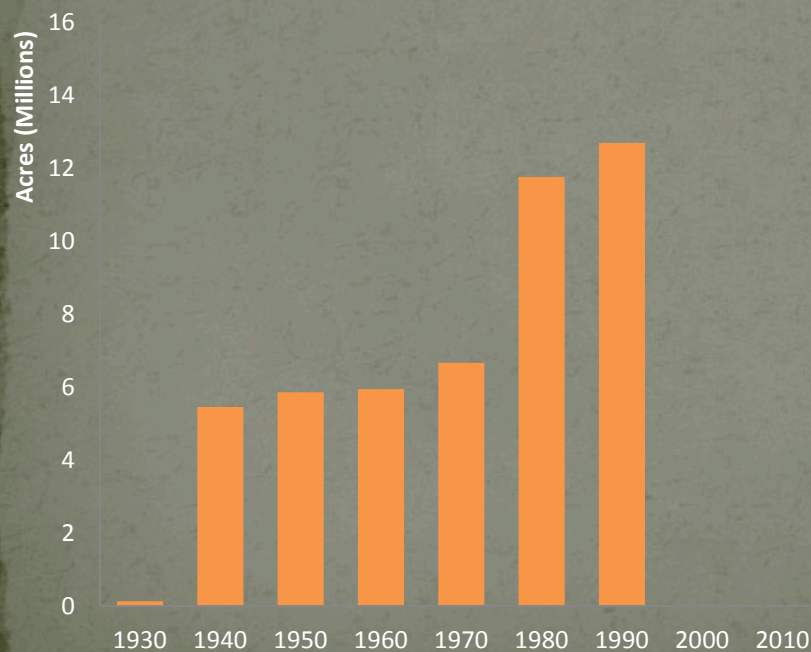


Nevada Land Withdrawals to 1980

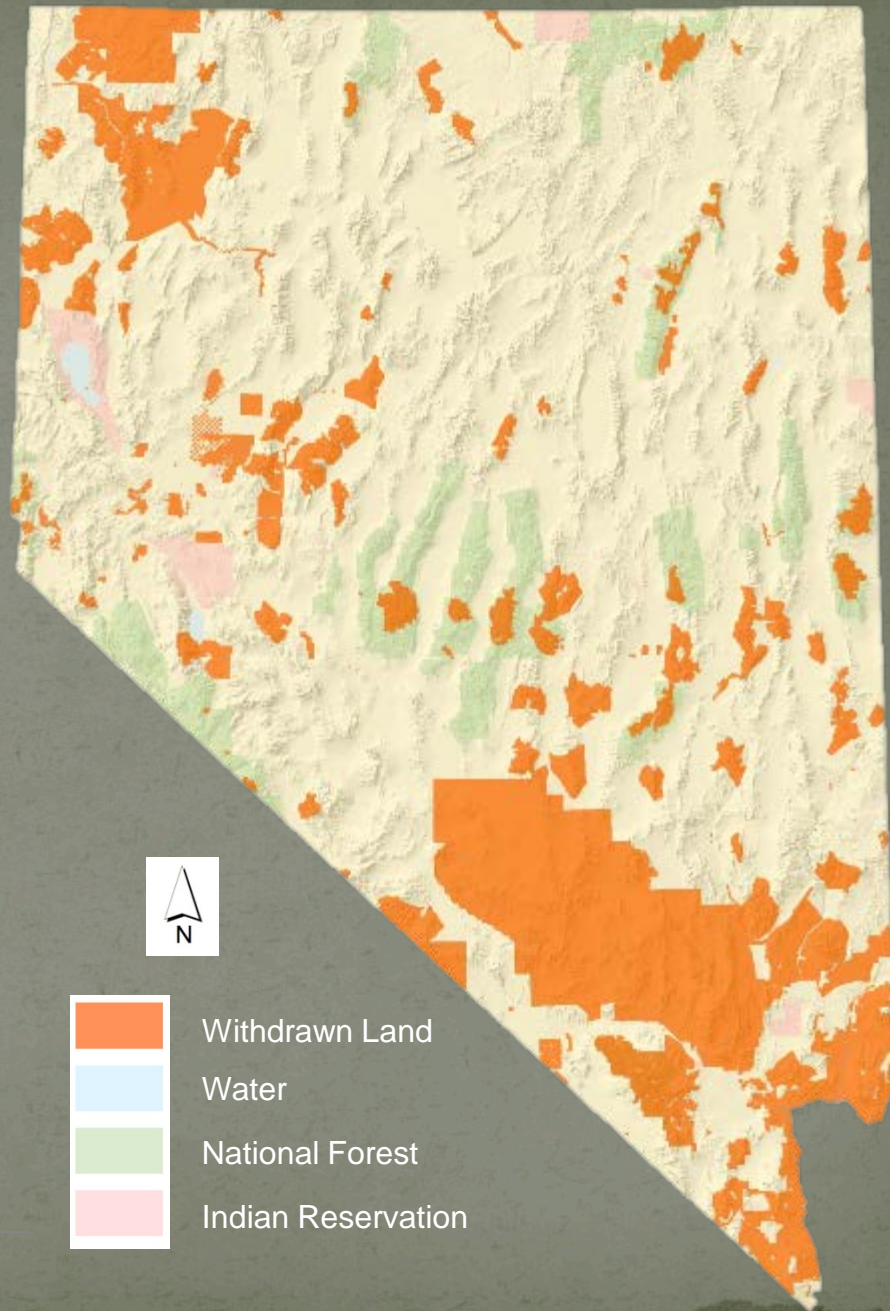
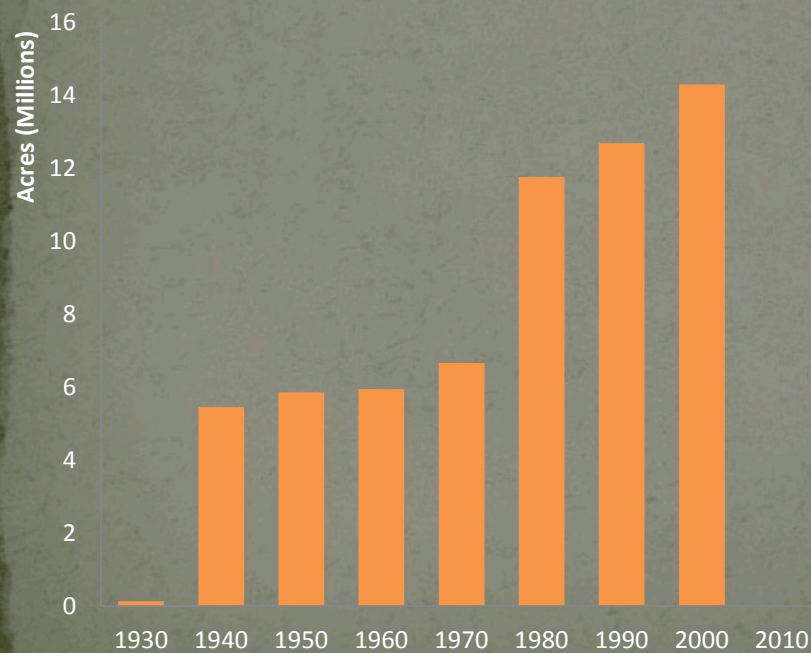


*Map depicting to 1990

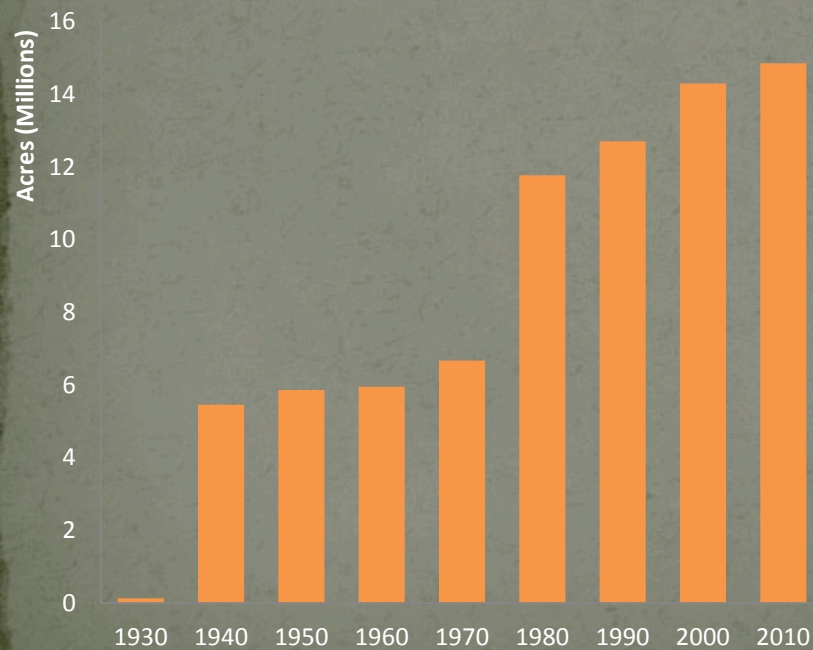
Nevada Land Withdrawals to 1990



Nevada Land Withdrawals to 2000

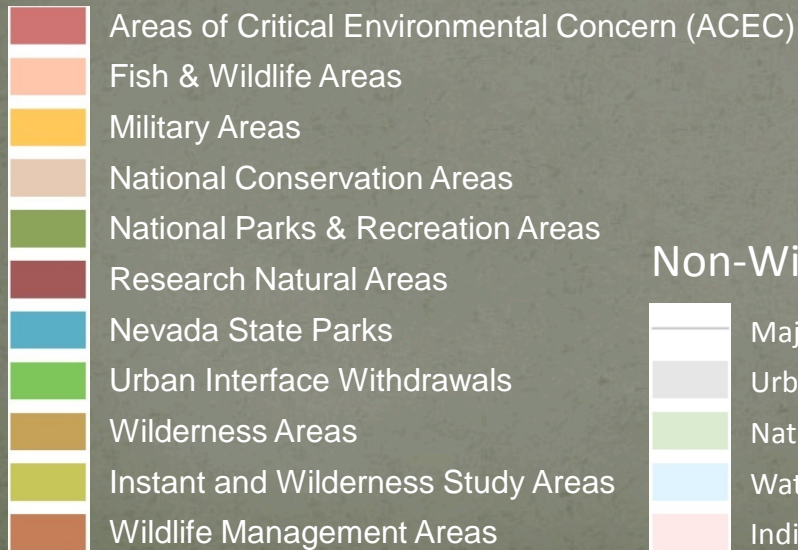


Nevada Land Withdrawals through 2010

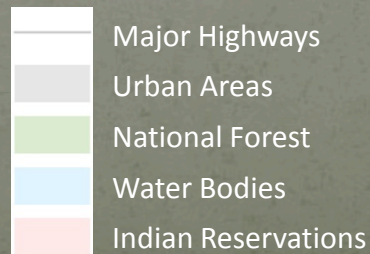


Nevada Land Withdrawal Status through 2010

Withdrawn Lands



Non-Withdrawn Lands





Total Land Area Withdrawn through 2010

Year	Acres	% of Nevada
>1930	132,247	0.19%
-1940	5,460,598	7.77%
-1950	5,861,114	8.34%
-1960	5,951,860	8.47%
-1970	6,672,218	9.50%
-1980	11,767,565	16.75%
-1990	12,701,336	18.08%
-2000	14,299,822	20.35%
-2010	14,848,842	21.13%

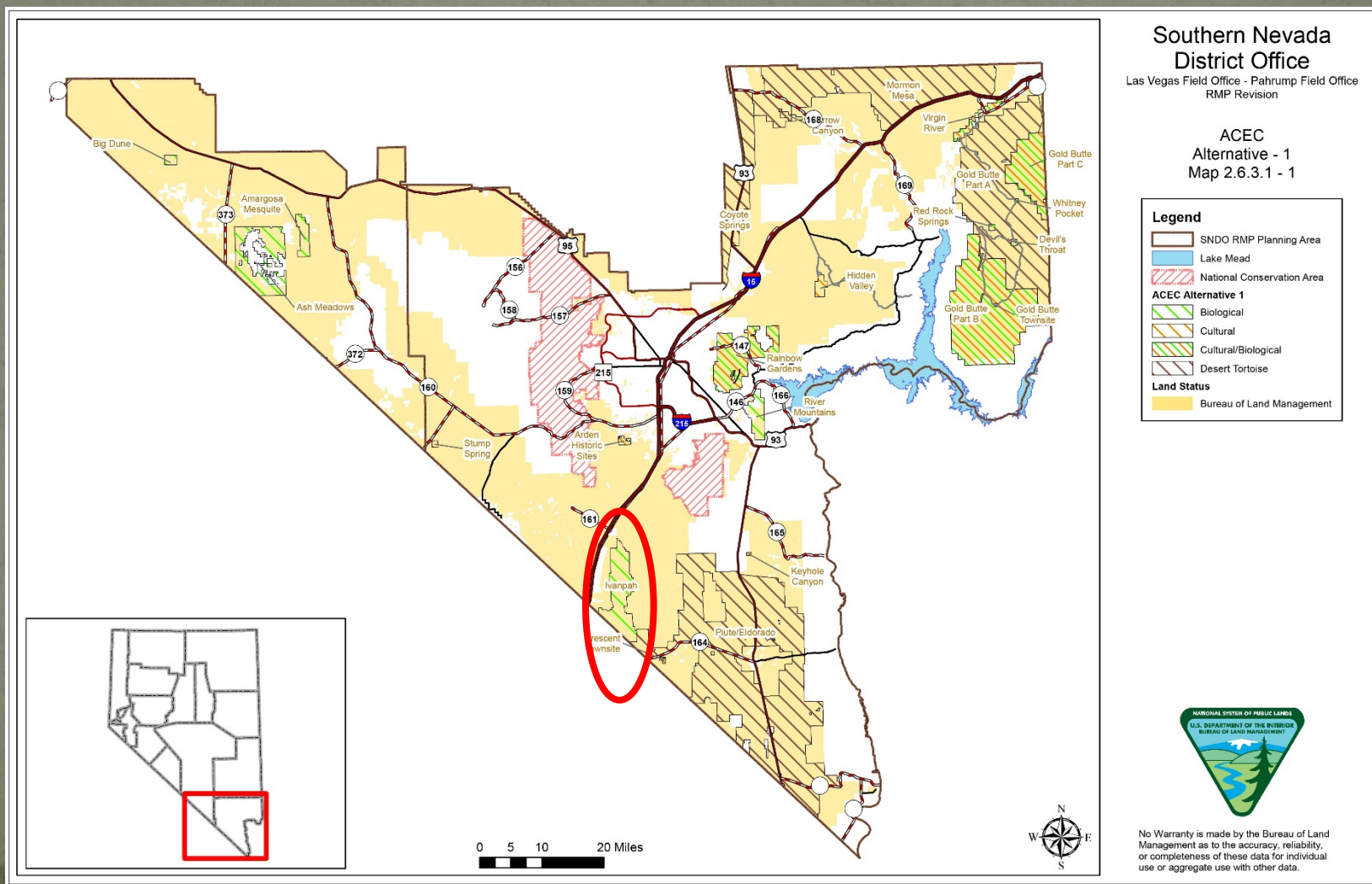
← Wilderness Act

← FLPMA

← Wilderness Designations

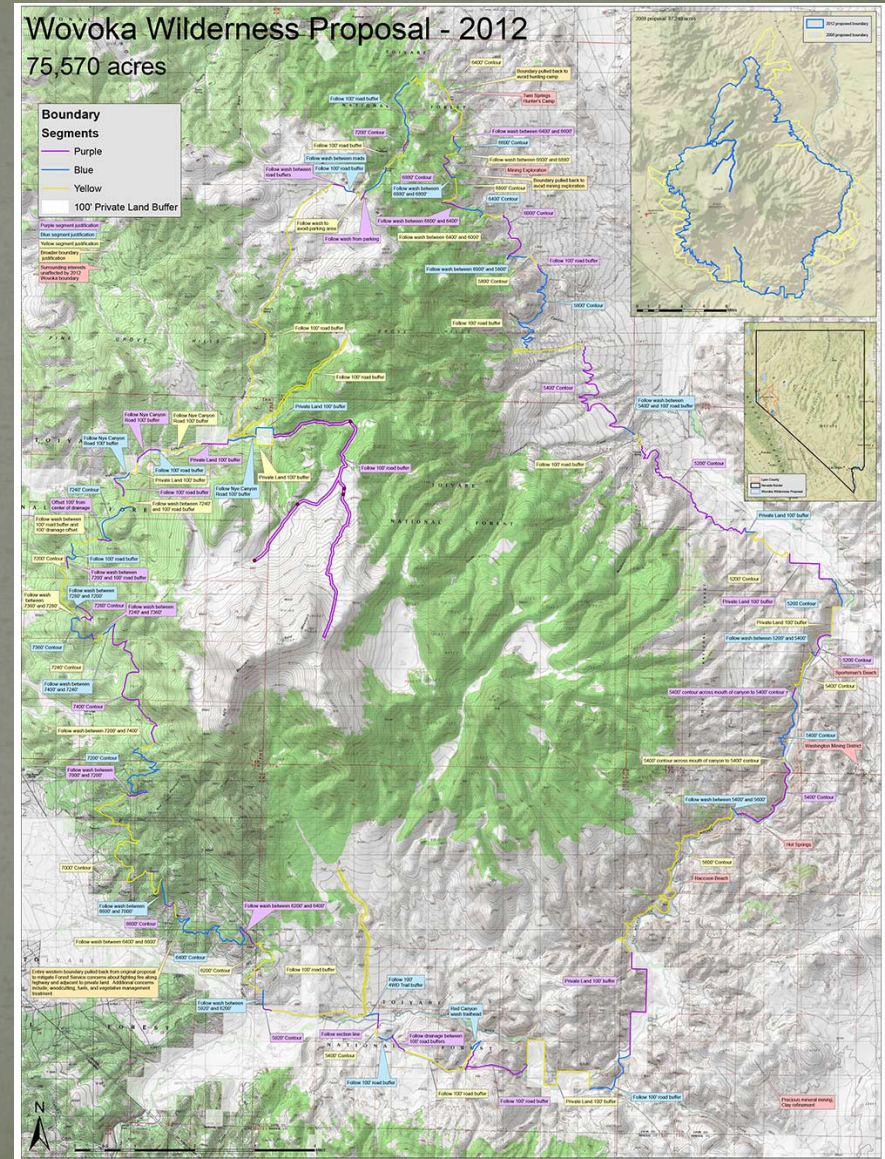
Recent Withdrawals: Jan, 2011 through May, 2018

- Ivanpah ACEC (Silver State South ROD; 2013)
 - 31,857 acres Case File: NVN 085801



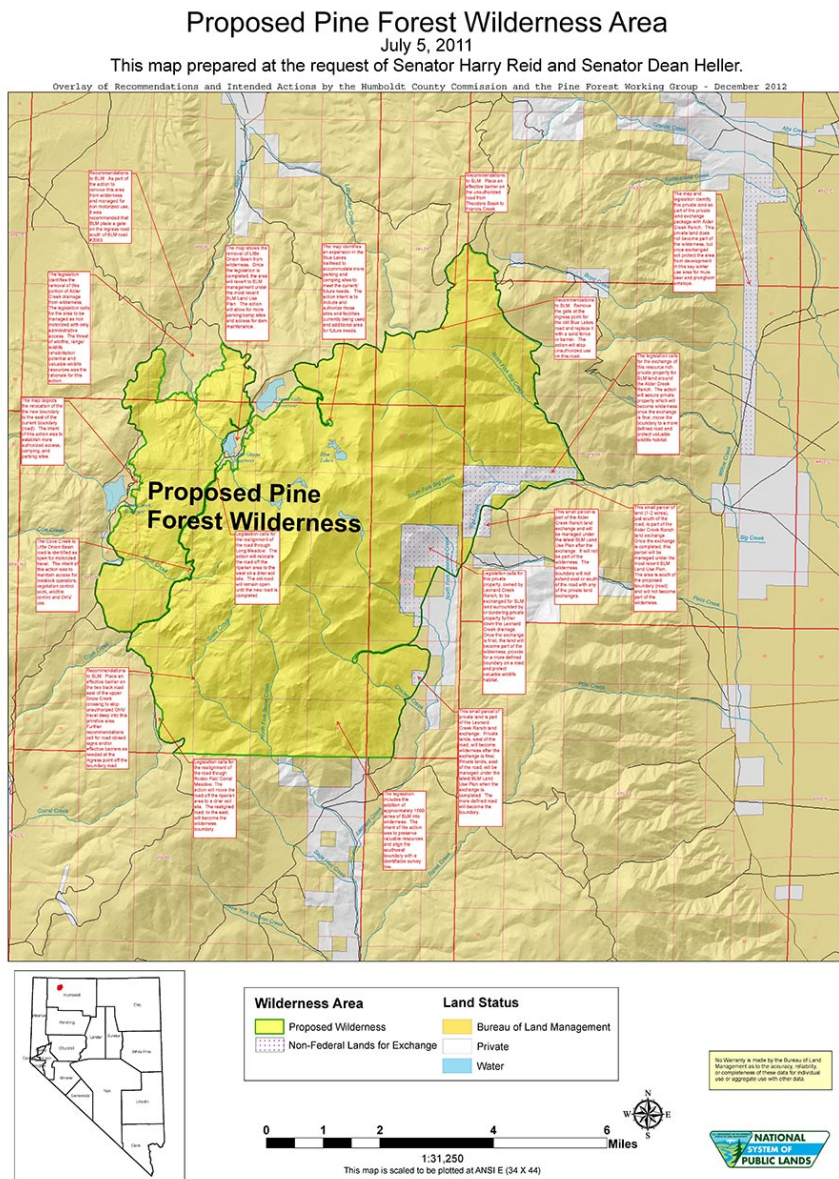
Recent Withdrawals: Jan, 2011 through May, 2018

- Wovoka Wilderness (USFS; 2014):
 - 48,981 acres



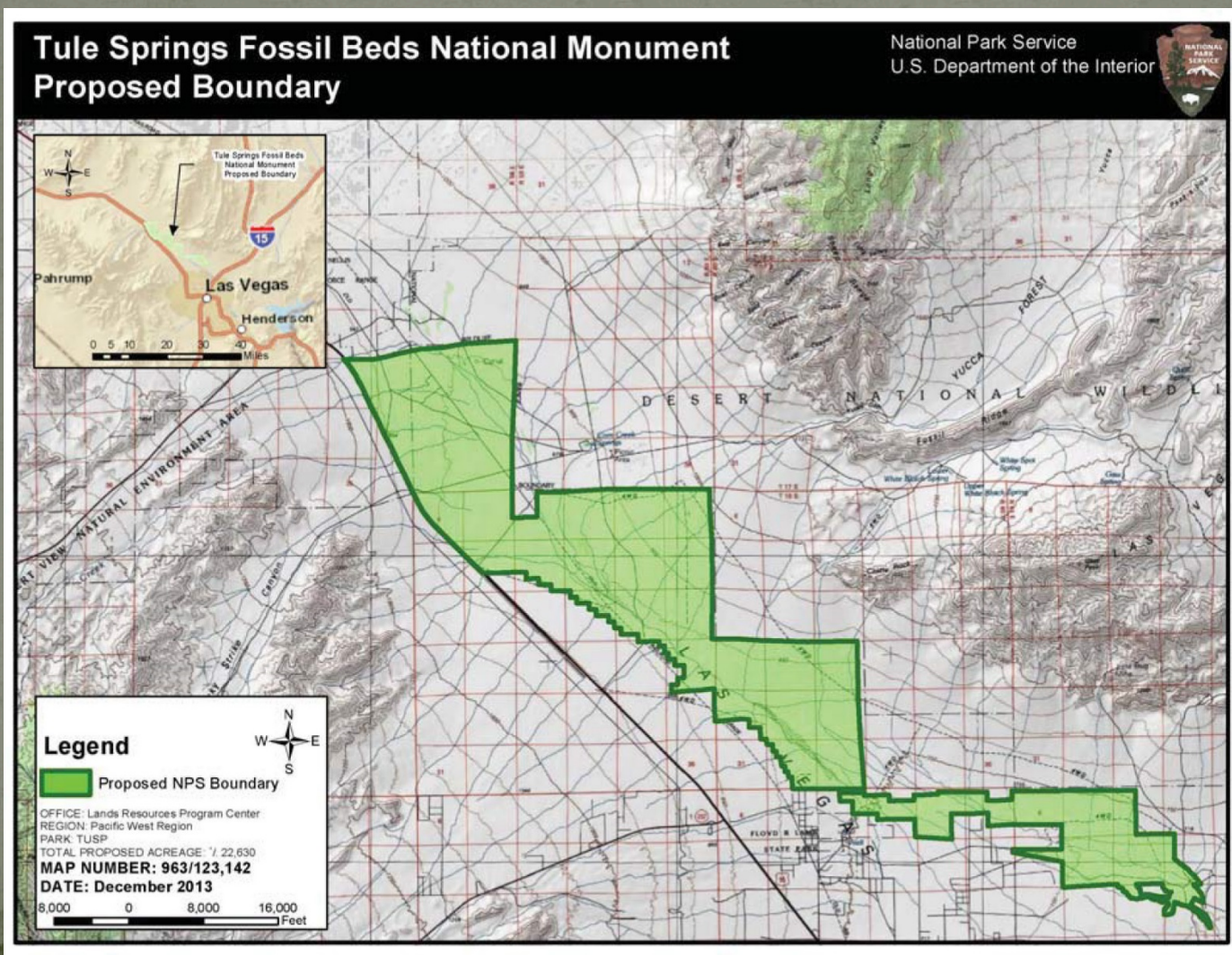
Recent Withdrawals: Jan, 2011 through May, 2018

- Pine Forest Range Wilderness (BLM; 2014):
 - 24,015 acres
 - Release of 25,650 acres from Blue Lakes and Alder Creek WSA
 - Net 1,635 Acres released in WSA to Wilderness conversion



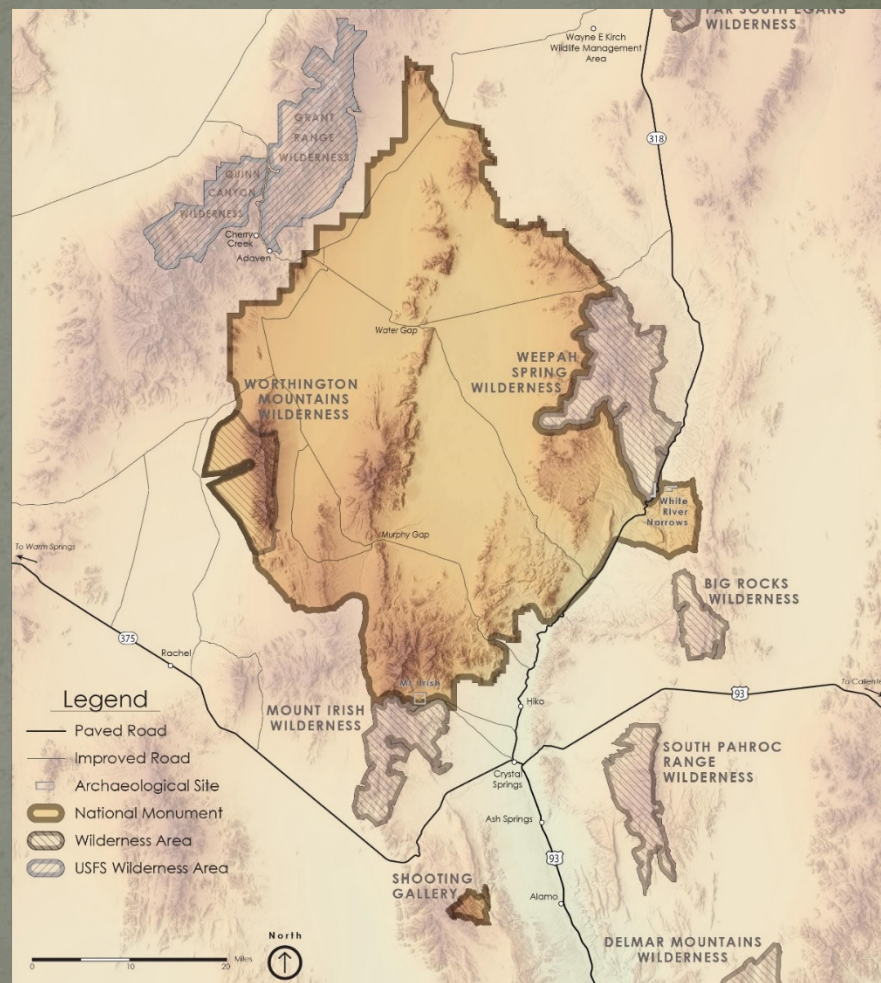
Recent Withdrawals: Jan, 2011 through May, 2018

- Tule Springs National Monument (2014)
 - 22,650 acres



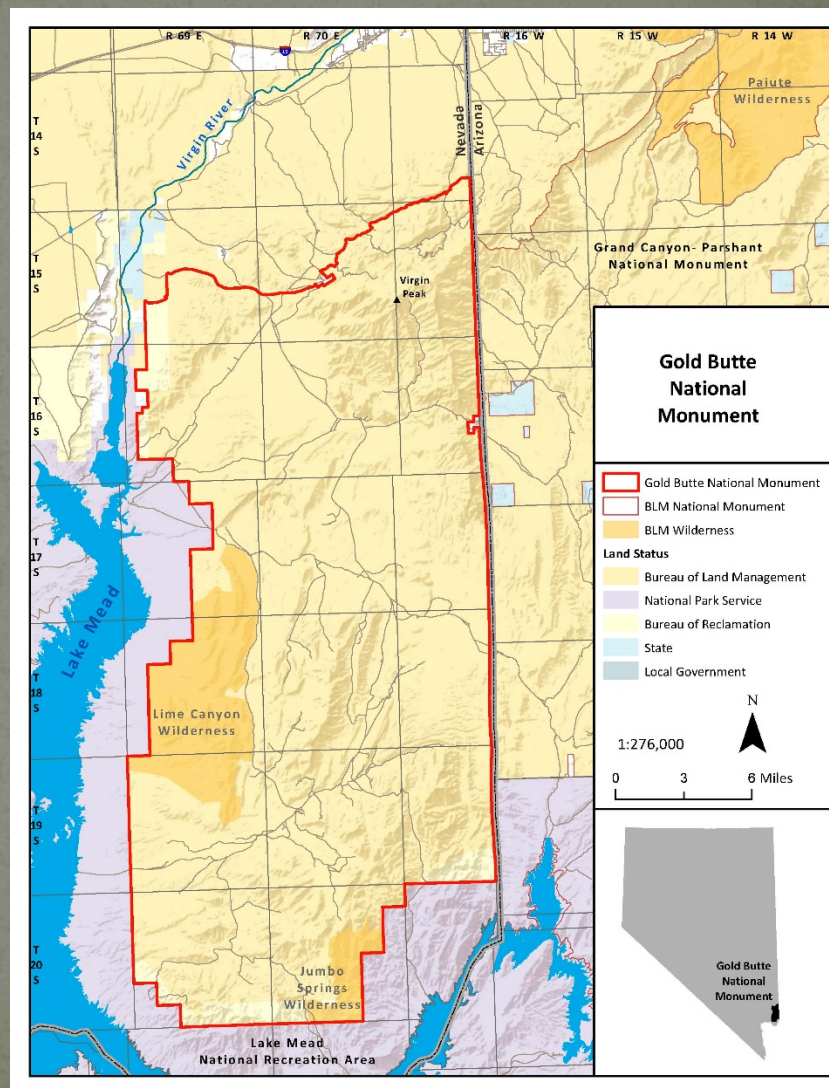
Recent Withdrawals: Jan, 2011 through May, 2018

- Basin & Range National Monument (2015)
 - 704,000 acres
 - 15,075 acres already within Mt. Irish ACEC
 - 30,623 acres already within Worthington Mountains Wilderness
 - Net 658,302 acres withdrawn outside of preexisting withdrawals



Recent Withdrawals: Jan, 2011 through May, 2018

- Gold Butte National Monument (2016)
 - 296,941 acres
 - 293,539 acres already within ACEC
 - Net 3,402 additional acres withdrawn outside of original ACEC
 - Remaining portions of Gold Butte/Virgin River ACECs still in place



Recent Withdrawals: Jan, 2011 through May, 2018

Recent Locatable Mineral Withdrawals Summary

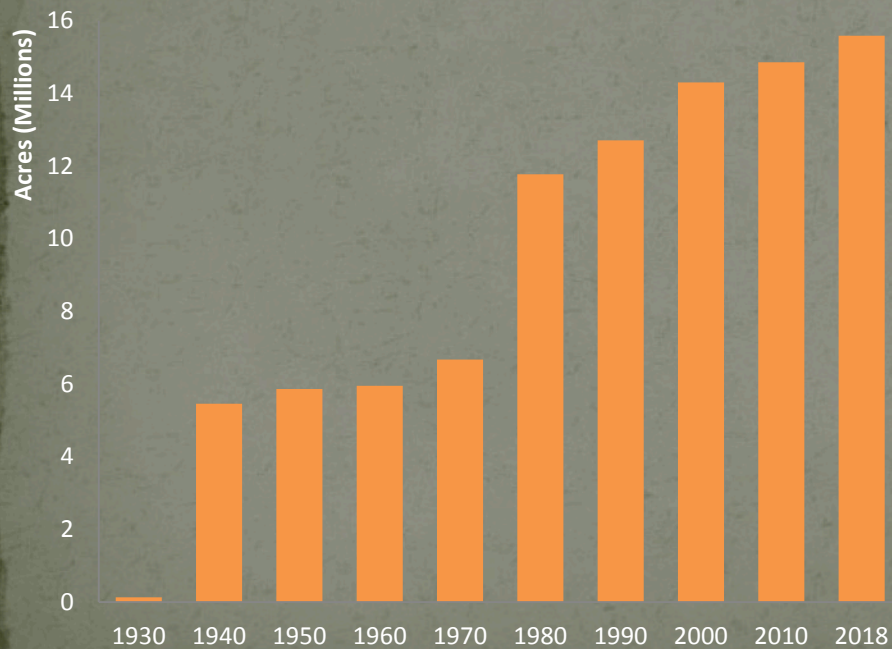
- National Monuments:
 - Tule Springs Fossil Beds (2014): 22,650 acres
 - Basin and Range (2015): 704,000 acres
 - 15,075 acres already within ACEC area (Mt. Irish ACEC)
 - 30,623 acres already within Wilderness (Worthington Mountains Wilderness)
 - Net 658,302 additional acres withdrawn
 - Gold Butte National Monument (2016): 296,941 acres
 - 293,539 acres already within ACEC (multiple)
 - Net 3,402 additional acres withdrawn
- BLM & USFS Wilderness Areas:
 - Pine Forest Range Wilderness (BLM; 2014): 24,015 acres
 - 25,650 acres released from WSA
 - Net release of 1,635 acres
 - Wovoka Wilderness (USFS; 2014): 48,981 acres
- Areas of Critical Environmental Concern
 - Ivanpah (Silver State South ROD; 2014): 31,857 acres

Total Land Area Withdrawn through May, 2018

(not inclusive of proposed withdrawals)

Year	Acres	% of Nevada	
>1930	132,247	0.19%	
-1940	5,460,598	7.77%	
-1950	5,861,114	8.34%	
-1960	5,951,860	8.47%	
-1970	6,672,218	9.50%	← Wilderness
-1980	11,767,565	16.75%	← FLPMA
-1990	12,701,336	18.08%	← Wilderness Study Areas
-2000	14,299,822	20.35%	
-2010	14,848,842	21.13%	
-2018	15,642,626	22.26%	

Nevada Land Withdrawals to May, 2018



Nevada Land Withdrawal Status through May, 2018

Legend

Withdrawn

- State or County Land
- Department of Defense
- Department of Energy
- Fish and Wildlife
- National Park
- Regional Park
- Area of Critical Environmental Concern
- Wilderness
- Wilderness Study Area

- Urban Interface
 - National Recreation Area
 - National Monument NCA
 - Research Natural Area
 - Wildlife Management Area
- ### Non-Withdrawn
- Bureau of Indian Affairs
 - Forest Service
 - Water

Pine Forest

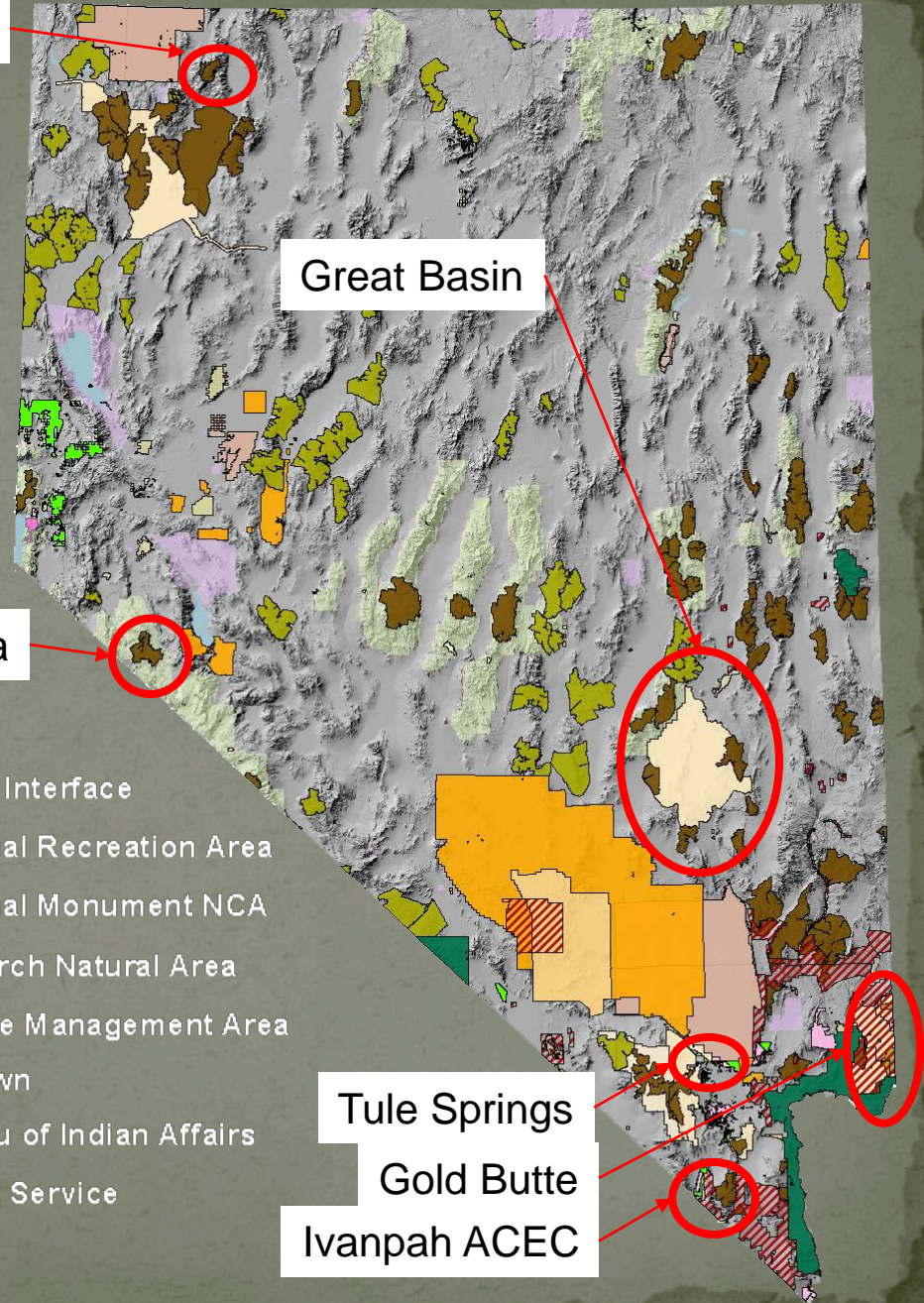
Great Basin

Wovoka

Tule Springs

Gold Butte

Ivanpah ACEC



Total Land Area Withdrawals through May, 2018

Land Use	Acres	% of Total Withdrawn	% of Nevada
Wilderness ₁	2,469,729	15.79%	3.51%
Wilderness/National Monument & National Conservation Area	500,244	3.20%	0.71%
Wilderness/National Park & Recreation Area	78,492	0.50%	0.11%
Wilderness/Research Natural Area	25,477	0.16%	0.04%
Wilderness/Research Natural Area/National Park & Recreation Area	3,987	0.03%	0.01%
Wilderness/Areas of Critical Environmental Concern	142,550	0.91%	0.20%
Wilderness/National Conservation Area/Areas of Critical Environmental Concern	405	0.00%	0.00%
Instant & Wilderness Study Areas ₂	2,646,911	16.92%	3.77%
Instant & Wilderness Study Area/National Park & Recreation Area	59,862	0.38%	0.09%
Instant & Wilderness Study Area/Areas of Critical Environmental Concern	4,439	0.03%	0.01%
Urban Interface ₁₀	254,811	1.63%	0.36%
Urban Interface/Areas of Critical Environmental Concern	752	0.00%	0.00%
Research Natural Area ₄	13,415	0.09%	0.02%
National Monument & National Conservation Area ₃	1,267,308	8.10%	1.80%
National Monument & National Conservation Area/Areas of Critical Environmental Concern	297,213	1.90%	0.42%
National Monument & National Conservation Area/State Park	528	0.00%	0.00%
Areas of Critical Environmental Concern ₅	948,414	6.06%	1.35%
Military Area ₆	3,366,658	21.52%	4.79%
Military Area/National Wildlife Range & Refuge	845,464	5.40%	1.20%
National Wildlife Range & Refuge ₇	1,556,144	9.95%	2.21%
Wildlife Management Area ₈	98,255	0.63%	0.14%
National Park & Recreation Area ₉	929,928	5.94%	1.32%
State Park	131,640	0.84%	0.19%
Totals	15,642,626	100.00%	22.26%

*see slide notes for sources

Total Land Area Withdrawals through 2018

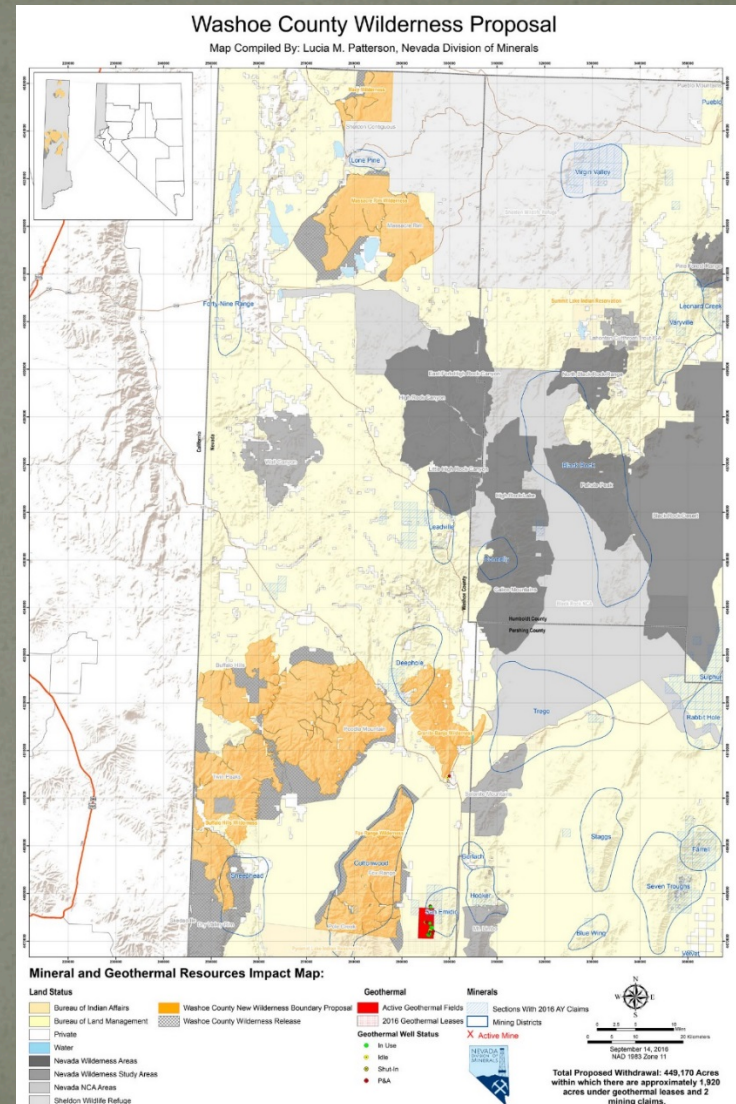
(Major Categories)

Land Use	Acres	% of Total Withdrawn	% of Nevada
Military ₁	4,212,122	26.93%	5.99%
Wilderness ₂	3,220,885	20.59%	4.58%
Instant & Wilderness Study Area ₃	2,711,212	17.33%	3.86%
National Wildlife Range & Refuge ₄	1,556,144	9.95%	2.21%
Areas of Critical Environmental Concern ₅	948,414	6.06%	1.35%
National Park & Recreation Area ₆	929,928	5.94%	1.32%
National Monument & National Conservation Area ₇	1,565,049	10.01%	2.23%
Urban Interface ₈	255,563	1.63%	0.36%
Wildlife Management Area ₉	98,255	0.63%	0.14%
State Park ₁₀	131,640	0.84%	0.19%
Research Natural Area ₁₁	13,415	0.09%	0.02%
Totals	15,642,626	100.00%	22.26%

1. The Military total includes portions of the National Wildlife Range & Refuge.
2. The Wilderness total includes portions of the National Conservation Area, Research Natural Area, Areas of Critical Environmental Concern, and Wildlife Management Area. Some portions of National Parks are included, though some are not.
3. The Instant & Wilderness Study Area includes portions of the National Park and Recreation Area and the Areas of Critical Environmental Concern.
4. The National Wildlife Range and Refuge total is only that area not included in the Military Area.
5. The Areas of Critical Environmental Concern total is only that area not included in the Wilderness Area, the Instant and Wilderness Study Area, the Urban Interface Area, Fish and Wildlife Refuge Area and the National Conservation Area.
6. The National Park and Recreation Area total is only that area not included in the Wilderness Area and the Instant and Wilderness Study Area.
7. The National Conservation Area total includes portions of the Areas of Critical Environmental Concern and State Park Area.
8. The Urban Interface Area total includes portions of the Areas of Critical Environmental Concern.
9. The Wildlife Management Area total is only that area not included in any other withdrawn areas.
10. The State Park Area total is only that area not included in the National Conservation Area or Areas of Critical Environmental Concern.
11. The Research Natural Area total is only that area not included in other withdrawn areas.

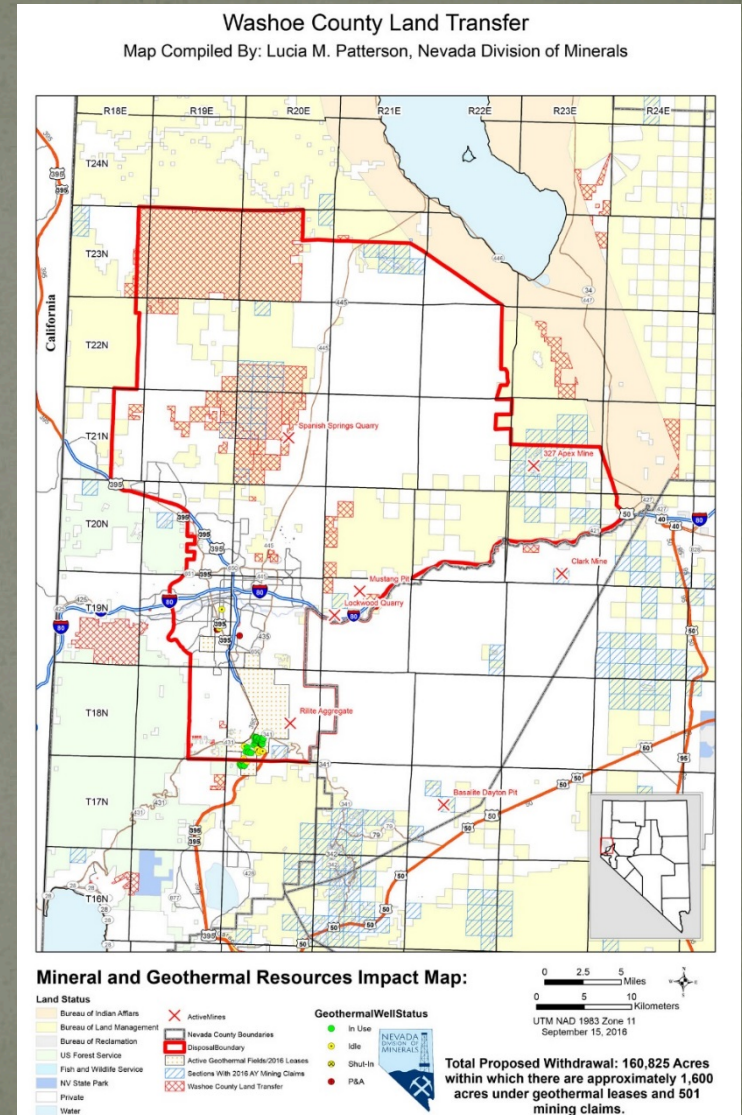
Proposed Land Withdrawals as of May, 2018

- Washoe County Wilderness Proposals
 - 600,421 acres currently designated WSA
 - 369,576 acres of WSA to be released
 - 147,516 acres of new wilderness (mostly from WSA)
 - 83,329 acres converted to NCA (mostly from WSA)
 - Net 111,721 acre release of preexisting withdrawn land
 - Additional proposed wilderness outside of WSAs
 - Burro Mountain & Granite-Banjo - 27,010 acres new withdrawal



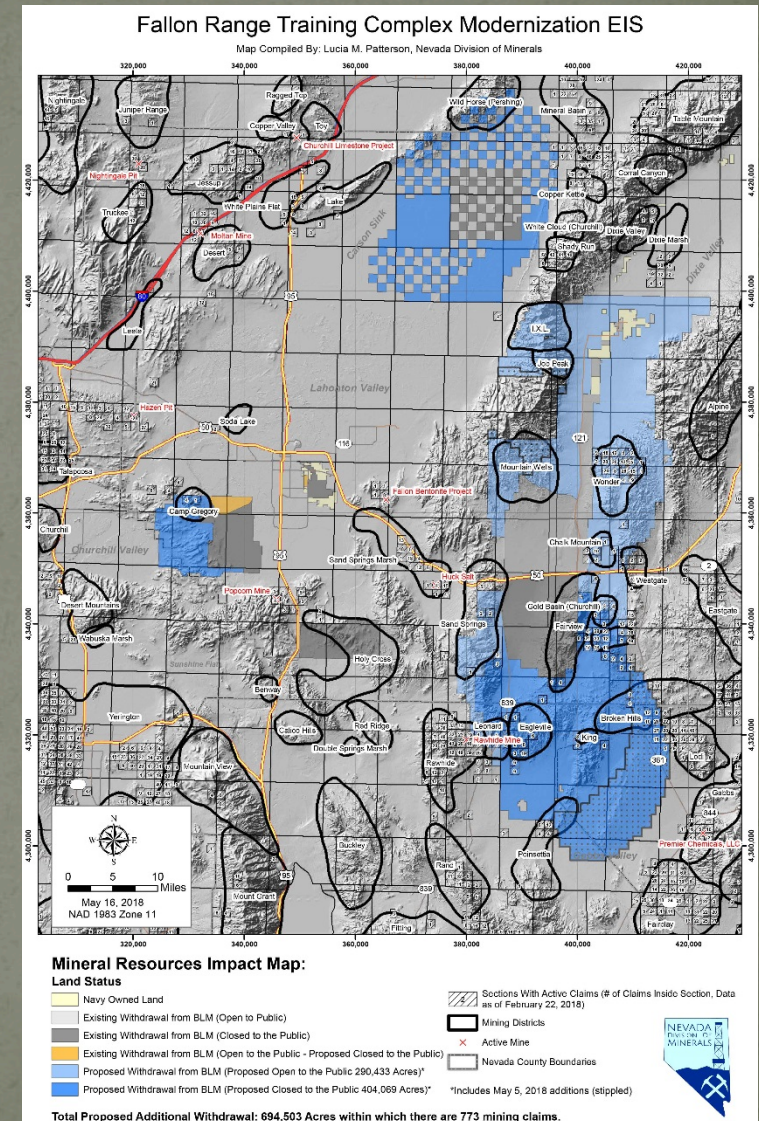
Proposed Land Withdrawals as of May, 2018

- Washoe County Land Transfer
 - 8,735 acres converted from BLM/USFS to private



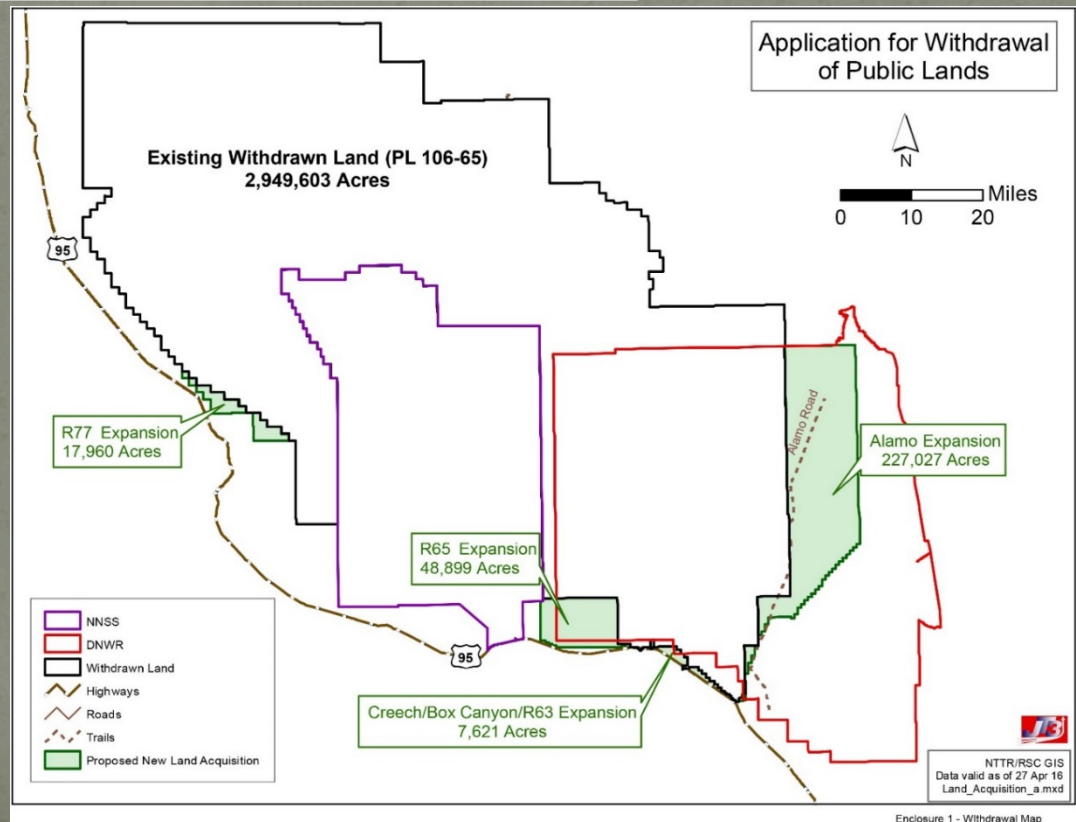
Proposed Land Withdrawals as of May, 2018

- Fallon Range Training Complex Modernization Expansion
 - 649,504 acres of new withdrawal



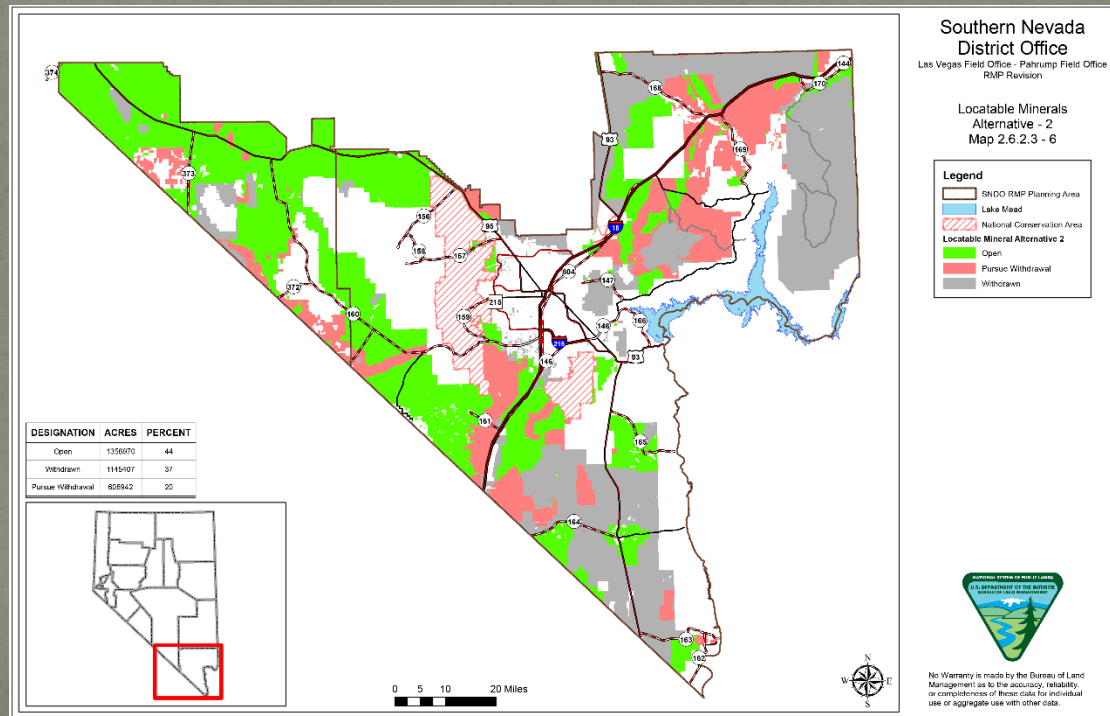
Proposed Land Withdrawals as of May, 2018

- Nellis Test and Training Range (NTTR)
 - 301,000 acres across all proposed alternatives
 - 265,811 acres within previously withdrawn lands (Desert National Wildlife Refuge)
 - Net 35,189 acres of new withdrawal



Proposed Land Withdrawals as of May, 2018

- Las Vegas and Pahrump Field Office Draft Resource Management Plan – Alternative 2 (most restrictive)
 - 608,942 acres to be withdrawn
 - 41,320 acres already within other areas of locatable-mineral withdrawal
 - Net 567,622 acres of new withdrawal



Proposed Land Withdrawals as of May, 2018

Proposed Locatable Mineral Withdrawals Summary

- Washoe County Economic Development and Conservation Act:
 - Wilderness, Wilderness Study Areas (WSAs) and National Conservation Areas (NCAs): 257,855 acres
 - 174,526 acres designated wilderness
 - 83,329 acres designated NCA
 - 369,576 acres of WSA released
 - Net 111,721 acre release of preexisting withdrawn land
 - Washoe County Economic Development and Conservation Act:
 - 8,735 acres converted from BLM/USFS to Private.
- DOD Expansions:
 - Nellis Test and Training Range (NTTR): 301,016 acres
 - Includes acreage for all proposed alternatives
 - 265,811 acres within previously withdrawn lands (Desert Refuge)
 - Net 35,205 acres of new withdrawal
 - Fallon Naval Air Station: 649,504 acres

Continued on next slide

Proposed Land Withdrawals as of May, 2018

- Resource Management Plan Revision:
 - Carson City RMP Revision, Alternative E (BLM Preferred): 470,603 acres withdrawn
 - 197,322 acres already within other areas of locatable-mineral withdrawal
 - Net 273,281 acres of new withdrawal
 - Las Vegas and Pahrump Field Office RMP Revision, Alternative 2: 608,942 acres withdrawn
 - 41,320 acres already within other areas of locatable-mineral withdrawal
 - Net 567,622 acres of new withdrawal

*largest locatable-mineral-withdrawal alternative, no specified BLM preferred alternative as of May, 2018)

Net total proposed locatable-mineral-withdrawal acreage : 1,310,905 acres
Net increase as a percentage of current withdrawal acreage: 8.38%
Net proposed withdrawn acreage as a percentage of Nevada: 1.87%

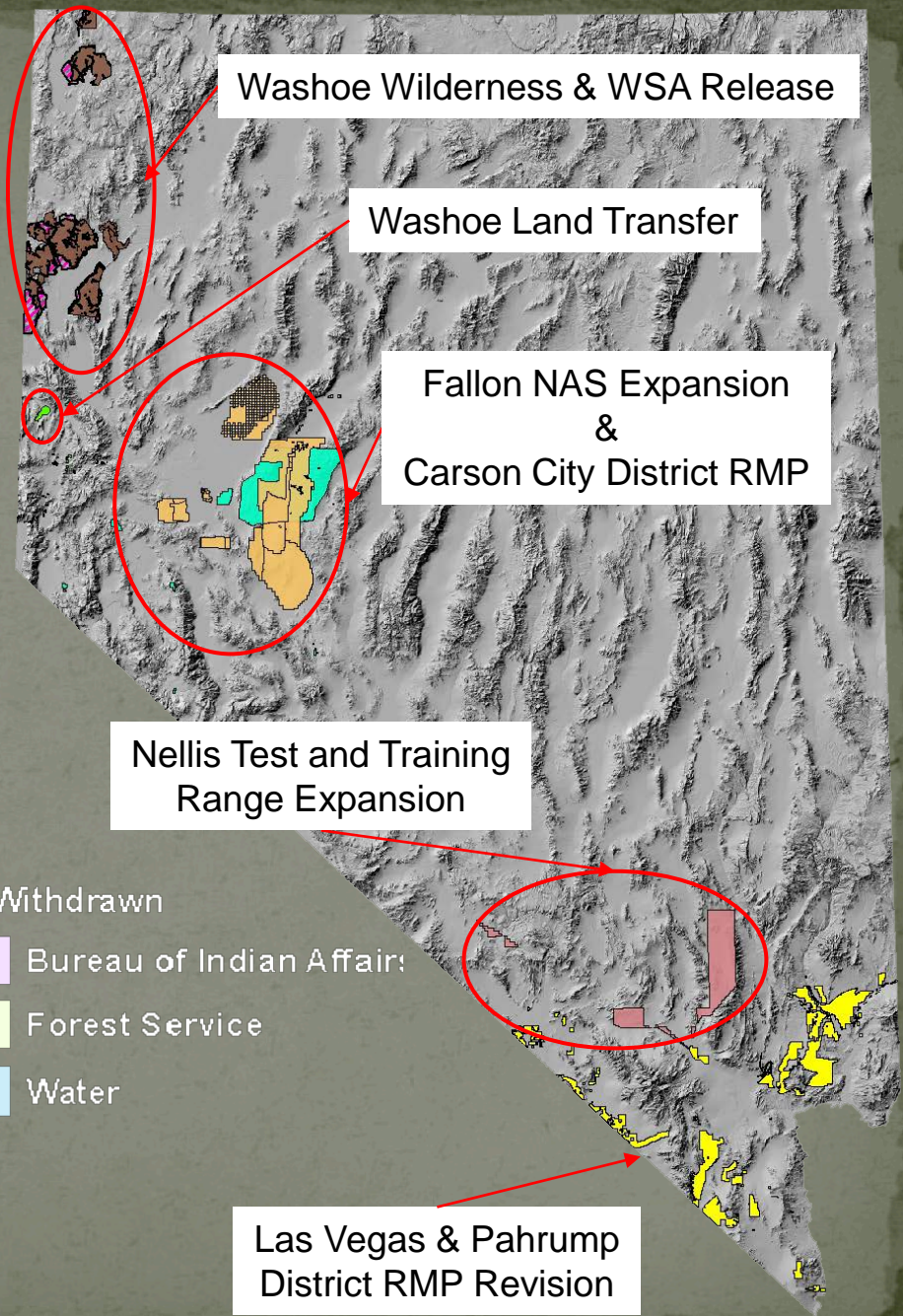
Proposed Nevada Land Withdrawals May, 2018

Legend

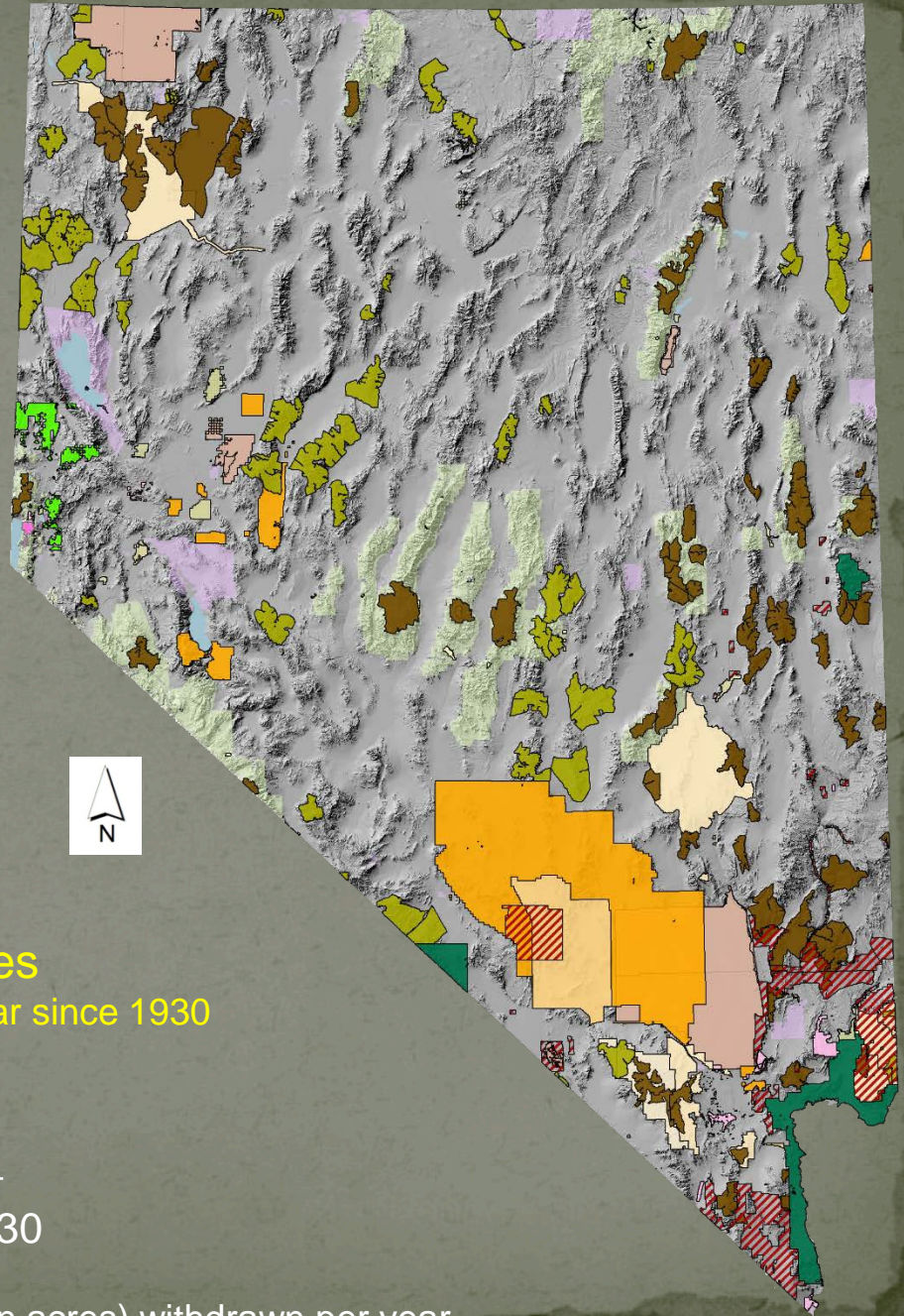
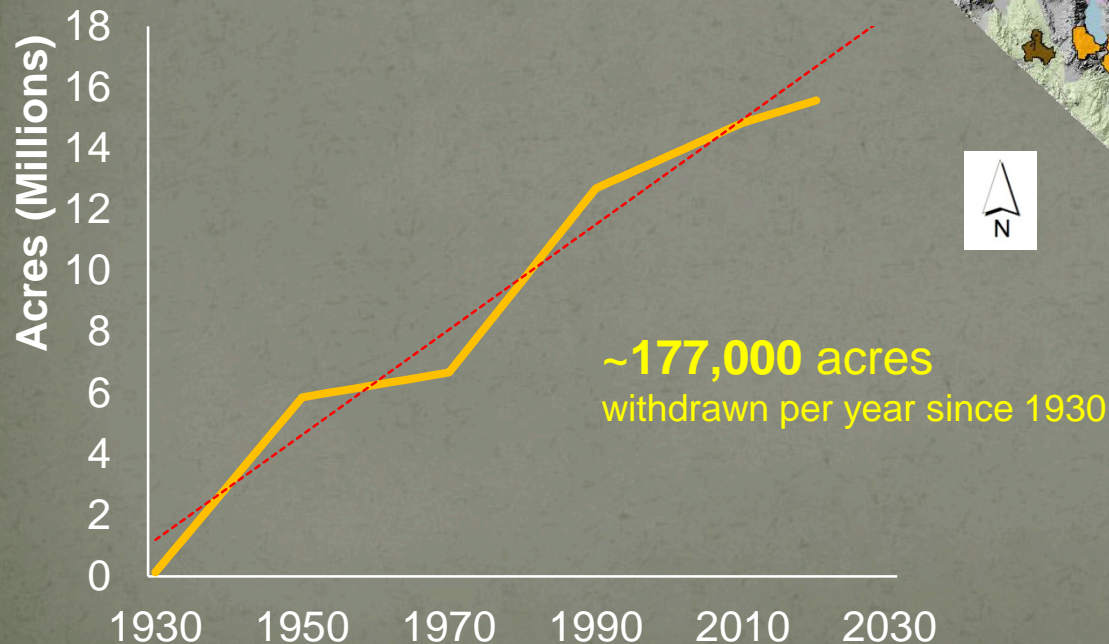
- Washoe Proposed WSA Release
- Washoe Proposed Wilderness
- Washoe Land Transfer
- Fallon Range Training Complex
- Nellis Test and Training Range
- Carson City RMP Alternative-E
- Las Vegas & Pahrump RMP Alternative-2

Non-Withdrawn

- Bureau of Indian Affairs
- Forest Service
- Water



Nevada Land Withdrawal Status May, 2018

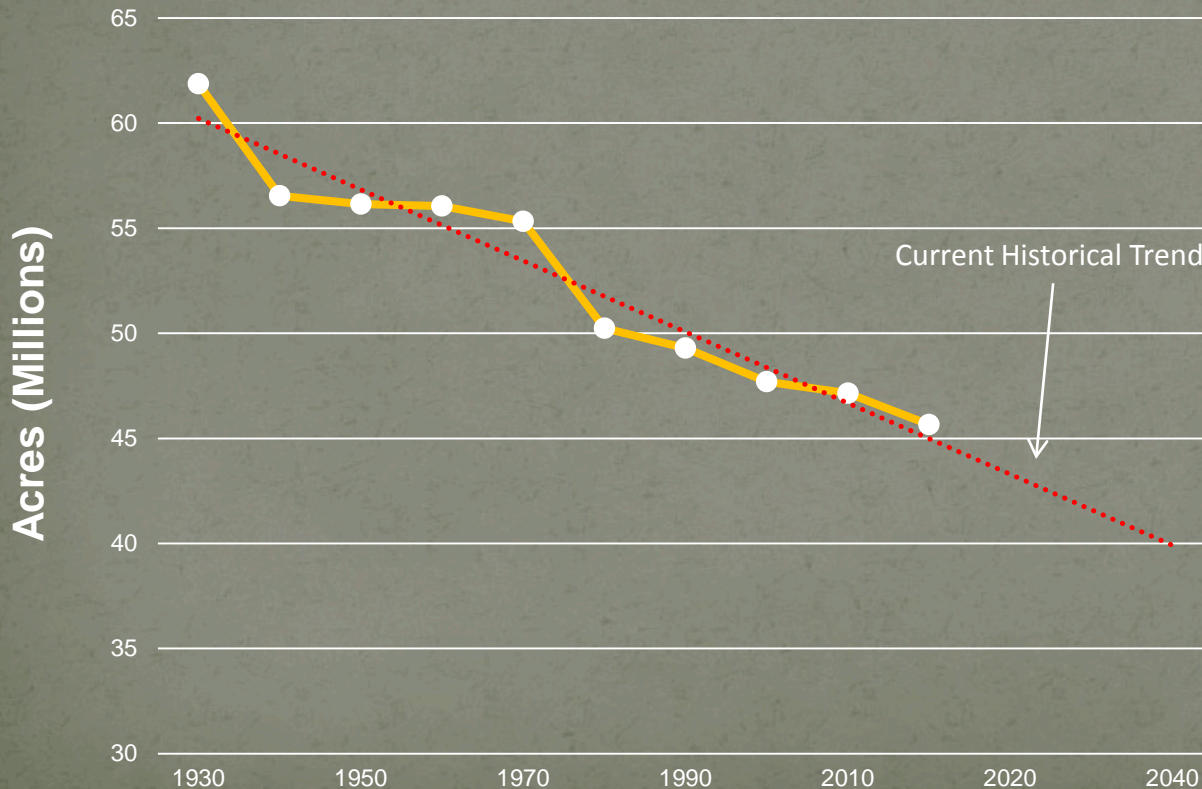


Line graph displaying the trend in the amount of land (in acres) withdrawn per year.

Current Historical Trend

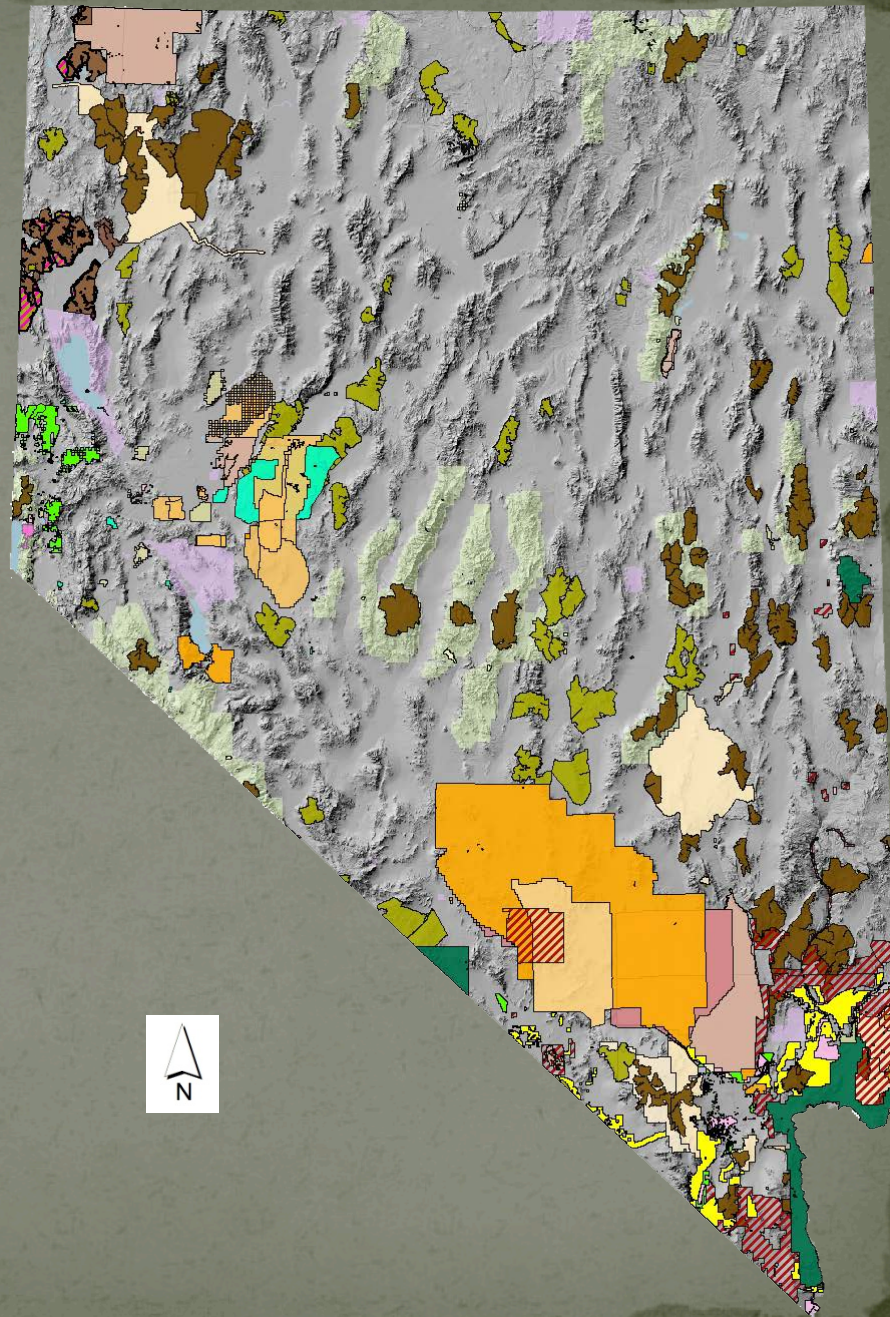
(Summary Result)

Available Federal Lands Open to Mineral Entry



The chart to the left depicts the decrease in federal lands open to locatable mineral entry by decade. Since 1930, approximately 1,770,000 acres of land are withdrawn each decade.

Current and Proposed Locatable Mineral Withdrawals as of May, 2018



Nevada Land Withdrawals from Mineral Entry

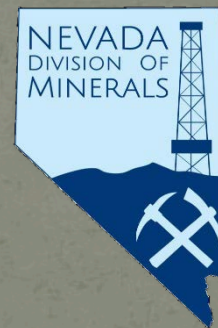
A Historical Perspective

May, 2018 update



University of Nevada, Reno

Modified from original study in 2011 by:
S. Bassett, I. Morrison, and K. Berry
Department of Geography
Mackay School of Earth Sciences and Engineering,
College of Science
University of Nevada, Reno



Updated in May, 2018 by:

Garrett A. Wake
Nevada Division of Minerals
gwake@minerals.nv.gov
Minerals.nv.gov